

LEA Name : Tredyffrin-Easttown SD
Address : West Valley Business Center
Wayne , PA 19087

County : Chester
AUN Number : 124157802
LEA Type : SD

Annual Financial Report Accuracy Certification Statement

For Fiscal Year Ending
6/30/2019

Pennsylvania Department of Education
&
Office of Comptroller Operations

PDE-2056: Intermediate Unit
PDE-2057: School District, AVTS/CTC, Charter School,
and Special Program Jointure

CERTIFICATION: By signing this page I agree that the electronic data submitted is a complete and accurate statement of the financial operations and status of the local education agency for the fiscal year. It has been prepared in accordance with generally accepted accounting principles and established Commonwealth of PA reporting guidelines.

Chief School Administrator Signature

Date

Board Secretary Signature

Date

Elizabeth Butch

Contact Person

butche@tesd.net

Contact Person E-mail Address

(610)240-1900 Ext :1933

Contact Person Telephone Number

(610)240-1881

Contact Person Fax Number

(Pursuant to PA School Code Section 218(b))

County : Chester

12/31/2019

Date _____

Auditing Firm:

CERTIFICATION: By signing this page I agree that the financial statements of the school have been properly audited as noted above pursuant to Article XXIV, and in the auditor's professional opinion, the Annual Financial Report (PDE-2057) submitted on the date referenced is materially consistent with the audited financial statements.

Chief School Administrator

Board Secretary

Signature _____ Date _____

Elizabeth Butch

Contact Person

butche@tesd.net

Contact Person E-mail Address

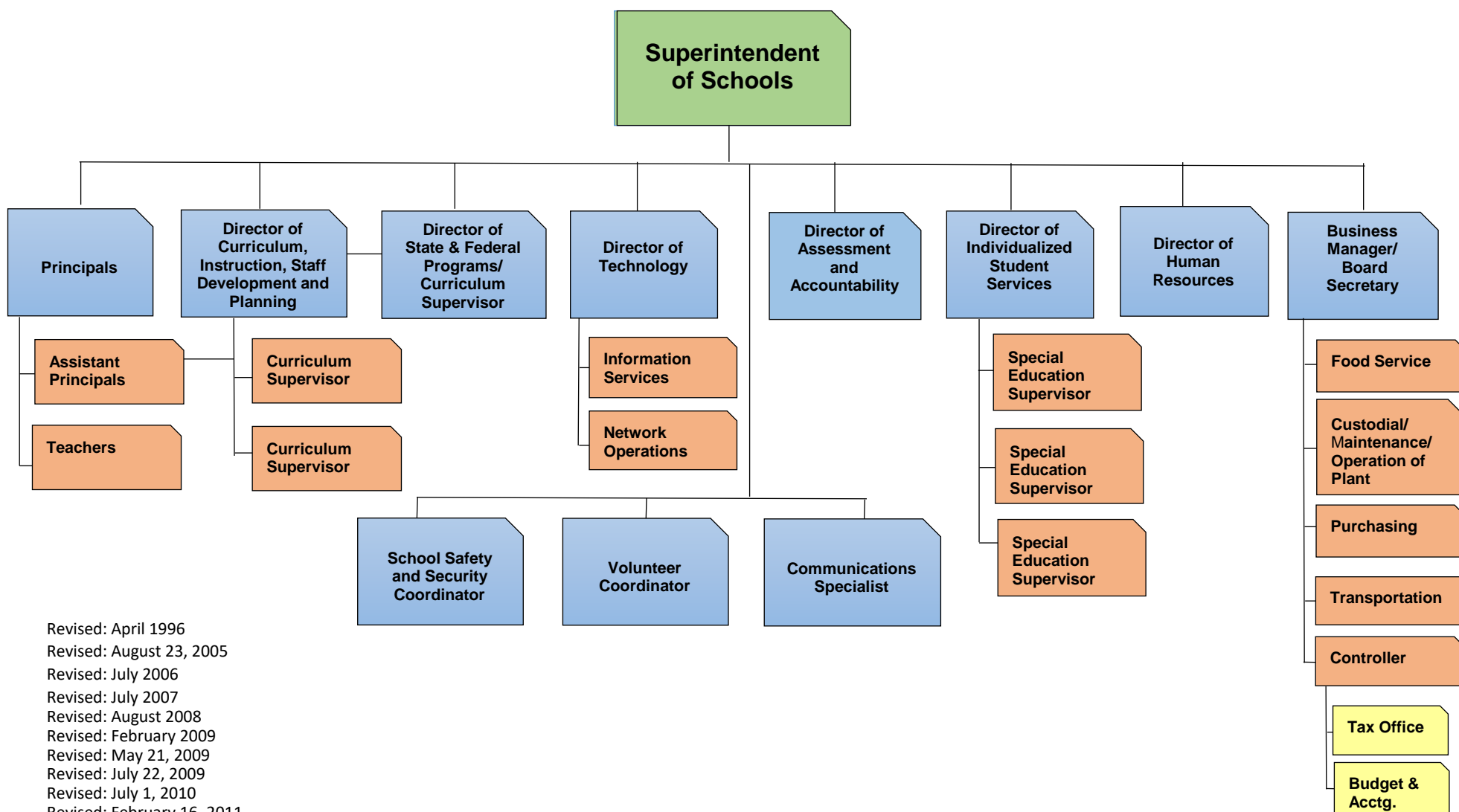
Signature _____ Date _____

(610)240-1900 Ext :1933

Contact Person Telephone Number

(610)240-1881

Contact Person Fax Number



Revised: April 1996
 Revised: August 23, 2005
 Revised: July 2006
 Revised: July 2007
 Revised: August 2008
 Revised: February 2009
 Revised: May 21, 2009
 Revised: July 22, 2009
 Revised: July 1, 2010
 Revised: February 16, 2011
 Revised: December 9, 2011
 Revised: May 30, 2012
 Revised: May 20, 2013
 Revised: November 12, 2015
 Revised: July 1, 2017
 Revised: July 2019

<u>Val Number</u>	<u>Description</u>	<u>Justification</u>
30390	Revenue Detail: AFR amount must equal PDE FAI System amount. 7110, AFR Rev Detail: \$3,627,910.47 7110, PDE FAI System: \$3,627,952.14	PDE provided \$41 of prior year Basic Ed funding adjustments in August 2019. The District did not accrue these funds and recorded them as 2020-21 revenue.
41140	Expenditure Detail - There is an entry in function 5150- 990 object "Other". Please explain what constitutes "Other". Expenditure 5150-990, Fund 39: \$745,691.60	Refinancing issuance costs and prepaid capitalized interest deducted from refinancing proceeds
41162	Expenditure Detail, Salaries (Object 100) and Benefits (Object 200 series): Amounts must be entered for both Salaries and Benefits. Please verify following fund and function codes: Fund 10 Function 1190;	The District charges federal program expenses to 1190. The District charges only salaries, not benefits to federal programs. The related benefit costs are charged to 1110 and not funded by federal funds.
42330	Expenditure Detail: AFR amount must equal or exceed PDE FAI System amount. 1000-562, AFR Exp Detail: \$496,181.84 1000-562, PDE FAI System: \$534,124.72	Difference reflects refund checks that charter schools provided for over payment of 2017-18 tuition.
50160	SOIN: All Governmental Fund General Obligation Bonds must include an amount for Interest Paid during Fiscal Year. Correct data or enter a justification.	The district issued GOB 2019 in February 2019. The first bond payment occurs in FY 2019-20, August 2019. As a result, there is no interest payment for GOB 2019 in FY 2018-19
50410	SESS - 2140 Psychological Services: SESS Schedule amounts for Special Education vary from prior year by 40% or more. Correct the data or enter a justification. SESS Schedule 2140: \$0.00 Prior Year SESS Schedule 2140: \$647.50	These contracted services are based on annual student needs, which change annually
50420	SESS - 2150 Speech Pathology and Audiology Services: SESS Schedule amounts for Special Education vary from prior year by 40% or more. Correct the data or enter a justification. SESS Schedule 2150: \$885.33 Prior Year SESS Schedule 2150: \$104.94	These contracted services are based on annual student needs, which change annually
50470	SESS - 2440 Nursing Services: SESS Schedule amounts for Special Education vary from prior year by 40% or more. Correct the data or enter a justification. SESS Schedule 2440: \$5,507.74 Prior Year SESS Schedule 2440: \$42,961.76	These contracted services are based on annual student needs, which change annually

LEA : 124157802 Tredyffrin-Easttown SD

Printed 11/27/2019 10:36:57 AM

Amounts Expressed in Whole Dollars		<u>General Fund</u> <u>(10)</u>	<u>Public Purpose Trust</u> <u>(27)</u>	<u>Other Compt Approved</u> <u>(28)</u>	<u>Athletic / Activity</u> <u>(29)</u>	<u>Capital Reserve (690.</u> <u>1850)</u> <u>(31)</u>
Assets And Deferred Outflows Of Resources						
Assets						
0100	Cash and Cash Equivalents	15,222,597				
0110	Investments	33,053,432				
0120	Taxes Receivable	1,494,457				
0130	Due From Other Funds	685,400				
0141	Due From Other Governments					
0142	State Revenue Receivable	5,058,535				
0143	Federal Revenue Receivable	383,814				
0145	Other Intergovernmental Revenue Receivable					
0146	Due from Primary Government					
0147	Due from Component Unit					
0150	Other Receivables	93,091				
0170	Inventories					
0180	Prepaid Expenses (Expenditures)					
0190	Other Current Assets					
Total Assets		\$55,991,326				
0910	Deferred Outflows of Resources					
Total Assets And Deferred Outflows Of Resources		\$55,991,326				

LEA : 124157802 Tredyffrin-Easttown SD

Printed 11/27/2019 10:36:57 AM

Amounts Expressed in Whole Dollars		<u>Capital Reserve (1431</u> <u>(32)</u>	<u>Other Capital Projects</u> <u>Fund</u> <u>(39)</u>	<u>Debt Service</u> <u>(40)</u>	<u>Permanent</u> <u>(90)</u>	<u>Total Governmental</u> <u>Funds</u>
Assets And Deferred Outflows Of Resources						
Assets						
0100	Cash and Cash Equivalents	664,353	29,754,412			45,641,362
0110	Investments	12,180,000				45,233,432
0120	Taxes Receivable					1,494,457
0130	Due From Other Funds	4,254,290				4,939,690
0141	Due From Other Governments					
0142	State Revenue Receivable					5,058,535
0143	Federal Revenue Receivable					383,814
0145	Other Intergovernmental Revenue Receivable					
0146	Due from Primary Government					
0147	Due from Component Unit					
0150	Other Receivables	82,797				175,888
0170	Inventories					
0180	Prepaid Expenses (Expenditures)					
0190	Other Current Assets					
Total Assets		\$17,181,440	\$29,754,412			\$102,927,178
0910	Deferred Outflows of Resources					
Total Assets And Deferred Outflows Of Resources		\$17,181,440	\$29,754,412			\$102,927,178

LEA : 124157802 Tredyffrin-Easttown SD

Printed 11/27/2019 10:36:57 AM

Amounts Expressed in Whole Dollars		<u>General Fund</u> <u>(10)</u>	<u>Public Purpose Trust</u> <u>(27)</u>	<u>Other Compt Approved</u> <u>(28)</u>	<u>Athletic / Activity</u> <u>(29)</u>	<u>Capital Reserve (690.</u> <u>1850)</u> <u>(31)</u>
Liabilities And Deferred Inflows Of Resources And Fund Balances						
Liabilities						
0400	Due to Other Funds					
0411	Due to Other Governments					
0412	Due to Primary Government					
0413	Due to Component Unit					
0420	Accounts Payable	3,568,754				
0430	Contracts Payable					
0440	Current Portion of Long-Term Debt					
0450	Short-Term Payables					
0461	Accrued Salaries and Benefits	1,055,052				
0462	Payroll Deductions and Withholding	19,264,737				
0480	Unearned Revenues	1,154,124				
0490	Other Current Liabilities	91,191				
Total Liabilities		\$25,133,858				
0950	Deferred Inflows of Resources					
Fund Balances						
0810	Nonspendable Fund Balance					
0820	Restricted Fund Balance					
0830	Committed Fund Balance	30,708,753				
0840	Assigned Fund Balance	148,715				
0850	Unassigned Fund Balance					
Total Fund Balances		\$30,857,468				
Total Liabilities, Deferred Inflows Of Resources And Fund Balances		\$55,991,326				

LEA : 124157802 Tredyffrin-Easttown SD

Printed 11/27/2019 10:36:57 AM

Amounts Expressed in Whole Dollars		<u>Capital Reserve (1431)</u> <u>(32)</u>	<u>Other Capital Projects</u> <u>Fund</u> <u>(39)</u>	<u>Debt Service</u> <u>(40)</u>	<u>Permanent</u> <u>(90)</u>	<u>Total Governmental</u> <u>Funds</u>
Liabilities And Deferred Inflows Of Resources And Fund Balances						
Liabilities						
0400	Due to Other Funds		4,903,783			4,903,783
0411	Due to Other Governments					
0412	Due to Primary Government					
0413	Due to Component Unit					
0420	Accounts Payable		1,054,137			4,622,891
0430	Contracts Payable					
0440	Current Portion of Long-Term Debt					
0450	Short-Term Payables					
0461	Accrued Salaries and Benefits					1,055,052
0462	Payroll Deductions and Withholding					19,264,737
0480	Unearned Revenues					1,154,124
0490	Other Current Liabilities					91,191
Total Liabilities			\$5,957,920			\$31,091,778
0950	Deferred Inflows of Resources					
Fund Balances						
0810	Nonspendable Fund Balance					
0820	Restricted Fund Balance	17,181,440	23,796,492			40,977,932
0830	Committed Fund Balance					30,708,753
0840	Assigned Fund Balance					148,715
0850	Unassigned Fund Balance					
Total Fund Balances		\$17,181,440	\$23,796,492			\$71,835,400
Total Liabilities, Deferred Inflows Of Resources And Fund Balances		\$17,181,440	\$29,754,412			\$102,927,178

Amounts Expressed in Whole Dollars	<u>General Fund</u> <u>(10)</u>	<u>Public Purpose Trust</u> <u>(27)</u>	<u>Other Compt Approved</u> <u>(28)</u>	<u>Athletic / Activity</u> <u>(29)</u>	<u>Capital Reserve (690.</u> <u>1850)</u> <u>(31)</u>
Revenues					
6000 Revenue from Local Sources	119,802,282				
7000 Revenue from State Sources	22,611,660				
8000 Revenue from Federal Sources	796,040				
Total Revenues	\$143,209,982				
Expenditures					
1000 Instruction	86,730,837				
2000 Support Services	43,061,525				
3000 Operation of Non-Instructional Services	2,026,192				
4000 Facilities Acquisition, Construction and Improvement Services					
5110 Debt Service					
5130 Refund of Prior Year Revenues / Receipts	12,909				
Total Expenditures	\$131,831,463				
Excess (Deficiency) Of Revenues Over Expenditures	\$11,378,519				
Other Financing Sources (Uses)					
9110 Face Value of Bonds Issued					
9120 Proceeds from Refunding of Bonds					
9130 Bond Premiums					
9200 Proceeds from Extended-Term Financing					
9300 Interfund Transfers - IN					
9400 Sale of or Compensation for Loss of Fixed Assets					
9710 Transfers from Component Units					
9720 Transfers from Primary Governments					
9910 Other Financing Sources Not Listed in the 9000 Series					
9990 Insurance Recoveries					
5120 Debt Service – Refunded Bonds					
5150 Bond Discounts					
5200 Interfund Transfers – Out	10,863,954				
5300 Transfers Out to Component Units/Primary Governments					
Total Other Financing Sources (Uses)	(\$10,863,954)				

LEA : 124157802 Tredyffrin-Easttown SD

Printed 11/27/2019 10:37:04 AM

Amounts Expressed in Whole Dollars	Capital Reserve (1431) (32)	Other Capital Projects Fund (39)	Debt Service (40)	Permanent (90)	Total Governmental Funds
Revenues					
6000 Revenue from Local Sources	245,165	303,179			120,350,626
7000 Revenue from State Sources					22,611,660
8000 Revenue from Federal Sources					796,040
Total Revenues	\$245,165	\$303,179			\$143,758,326
Expenditures					
1000 Instruction					86,730,837
2000 Support Services					43,061,525
3000 Operation of Non-Instructional Services					2,026,192
4000 Facilities Acquisition, Construction and Improvement Services	3,146	5,922,823			5,925,969
5110 Debt Service		118,118	6,863,954		6,982,072
5130 Refund of Prior Year Revenues / Receipts					12,909
Total Expenditures	\$3,146	\$6,040,941	\$6,863,954		\$144,739,504
Excess (Deficiency) Of Revenues Over Expenditures	\$242,019	(\$5,737,762)	(\$6,863,954)		(\$981,178)
Other Financing Sources (Uses)					
9110 Face Value of Bonds Issued		30,745,692			30,745,692
9120 Proceeds from Refunding of Bonds					
9130 Bond Premiums					
9200 Proceeds from Extended-Term Financing					
9300 Interfund Transfers - IN	4,000,000		6,863,954		10,863,954
9400 Sale of or Compensation for Loss of Fixed Assets					
9710 Transfers from Component Units					
9720 Transfers from Primary Governments					
9910 Other Financing Sources Not Listed in the 9000 Series					
9990 Insurance Recoveries					
5120 Debt Service – Refunded Bonds					
5150 Bond Discounts		745,692			745,692
5200 Interfund Transfers – Out					10,863,954
5300 Transfers Out to Component Units/Primary Governments					
Total Other Financing Sources (Uses)	\$4,000,000	\$30,000,000	\$6,863,954		\$30,000,000

Amounts Expressed in Whole Dollars		<u>General Fund</u> <u>(10)</u>	<u>Public Purpose Trust</u> <u>(27)</u>	<u>Other Compt Approved</u> <u>(28)</u>	<u>Athletic / Activity</u> <u>(29)</u>	<u>Capital Reserve</u> <u>(690.</u> <u>1850)</u> <u>(31)</u>
Special And Extraordinary Items						
9920	Special Items – Gains					
9930	Extraordinary Items – Gains					
5520	Special Items – Losses					
5530	Extraordinary Items – Losses					
Net Change In Fund Balances		\$514,565				
Fund Balance						
0001	Fund Balance - Beginning of Fiscal Year	30,342,903				
Fund Balance - End Of Year		\$30,857,468				

Amounts Expressed in Whole Dollars		<u>Capital Reserve (1431)</u> <u>(32)</u>	<u>Other Capital Projects</u> <u>Fund</u> <u>(39)</u>	<u>Debt Service</u> <u>(40)</u>	<u>Permanent</u> <u>(90)</u>	<u>Total Governmental</u> <u>Funds</u>
Special And Extraordinary Items						
9920 Special Items – Gains						
9930 Extraordinary Items – Gains						
5520 Special Items – Losses						
5530 Extraordinary Items – Losses						
Net Change In Fund Balances		\$4,242,019	\$24,262,238			\$29,018,822
Fund Balance						
0001 Fund Balance - Beginning of Fiscal Year		12,939,421	(465,747)			42,816,577
Fund Balance - End Of Year		\$17,181,440	\$23,796,491			\$71,835,399

LEA : 124157802 Tredyffrin-Easttown SD

Printed 11/27/2019 10:37:08 AM

Amounts Expressed in Whole Dollars		<u>Food Service</u> <u>(51)</u>	<u>Child Care</u> <u>Operations</u> <u>(52)</u>	<u>Other Enterprise</u> <u>(58)</u>	<u>TOTAL</u>	<u>Internal Service</u> <u>(60)</u>
Assets And Deferred Outflows Of Resources						
Current Assets						
0100	Cash and Cash Equivalents	867,548			867,548	
0110	Investments					
0130	Due From Other Funds					
0141	Due From Other Governments					
0142	State Revenue Receivable					
0143	Federal Revenue Receivable					
0146	Due from Primary Government					
0147	Due from Component Unit					
0150	Other Receivables	3,892			3,892	
0170	Inventories	28,923			28,923	
0180	Prepaid Expenses (Expenditures)					
0190	Other Current Assets					
Total Current Assets		\$900,363			\$900,363	
Noncurrent Assets						
0211	Land					
0212	Site Improvements (Net)					
0220	Buildings and Building Improvements (Net)					
0230	Machinery, Equipment and Furniture (Net)	371,088			371,088	
0250	Construction in Progress					
0260	Long Term Prepayments					
0290	Other Noncurrent Assets					
Total Noncurrent Assets		\$371,088			\$371,088	
0910	Deferred Outflows of Resources	532,835			532,835	
Total Assets And Deferred Outflows Of Resources		\$1,804,286			\$1,804,286	

LEA : 124157802 Tredyffrin-Easttown SD

Printed 11/27/2019 10:37:08 AM

Amounts Expressed in Whole Dollars	Food Service (51)	Child Care Operations (52)	Other Enterprise (58)	TOTAL	Internal Service (60)
Liabilities And Deferred Inflows Of Resources And Net Position					
Current Liabilities					
0400 Due to Other Funds	35,907			35,907	
0411 Due to Other Governments					
0413 Due to Component Unit					
0420 Accounts Payable	38,869			38,869	
0430 Contracts Payable					
0440 Current Portion of Long-Term Debt					
0450 Short-Term Payables					
0461 Accrued Salaries and Benefits					
0462 Payroll Deductions and Withholding					
0480 Unearned Revenues	127,157			127,157	
0490 Other Current Liabilities					
Total Current Liabilities	\$201,933			\$201,933	
Noncurrent Liabilities					
0510 Bonds Payable					
0520 Extended-Term Financing Agreements Payable					
0530 Lease-Purchase Obligations					
0540 Accumulated Compensated Absences	66,302			66,302	
0550 Authority Lease Obligations					
0560 Other Post-Employment Benefits (OPEB)	330,080			330,080	
0570 Net Pension Liability	3,722,000			3,722,000	
0599 Other Noncurrent Liabilities					
Total Noncurrent Liabilities	\$4,118,382			\$4,118,382	
Total Liabilities	\$4,320,315			\$4,320,315	
0950 Deferred Inflows of Resources	114,896			114,896	
Net Position					
0791 Net Investment in Capital Assets	371,088			371,088	
0008 Restricted Net Position (0792 – 0798)					
0799 Unrestricted Net Position	(3,002,013)			(3,002,013)	
Total Net Position	(\$2,630,925)			(\$2,630,925)	
Total Liabilities And Deferred Inflows Of Resources And Net Position	\$1,804,286			\$1,804,286	

Amounts Expressed in Whole Dollars	Food Service (51)	Child Care Operations (52)	Other Enterprise (58)	TOTAL	Internal Service (60)
Operating Revenues					
6600 Food Service Revenue	2,392,679			2,392,679	
0071 Charges for Services					
0072 Other Operating Revenue					
Total Operating Revenues	\$2,392,679			\$2,392,679	
Operating Expenses					
100 Personnel Services – Salaries	971,723			971,723	
200 Personnel Services – Employee Benefits	799,864			799,864	
300 Purchased Professional and Technical Services					
400 Purchased Property Services	42,328			42,328	
500 Other Purchased Services	314			314	
600 Supplies	1,017,150			1,017,150	
740 Depreciation	79,160			79,160	
810 Dues and Fees	3,657			3,657	
890 Miscellaneous Expenditures					
Total Operating Expenses	\$2,914,196			\$2,914,196	
Operating Income (Loss)	(\$521,517)			(\$521,517)	
Non Operating Revenues (Expenses)					
6500 Earnings on Investments	25,204			25,204	
6920 Contributions and Donations from Private Sources					
6930 Gains or Losses on Sale of Fixed Assets					
6991 Refunds of a Prior Year Expenditure					
7000 Revenue from State Sources	226,062			226,062	
8000 Revenue from Federal Sources	316,654			316,654	
9990 Insurance Recoveries					
820 Claims and Judgments Against the LEA					
830 Interest					
TOTAL Non Operating Revenues (Expenses)	\$567,920			\$567,920	
Income (Loss) Before Contributions And Transfers	\$46,403			\$46,403	

Amounts Expressed in Whole Dollars	<u>Food Service</u> <u>(51)</u>	<u>Child Care Operations</u> <u>(52)</u>	<u>Other Enterprise</u> <u>(58)</u>	<u>TOTAL</u>	<u>Internal Service</u> <u>(60)</u>
Contributions, Transfers, and Special and Extraordinary Items					
5200 Interfund Transfers – Out					
5300 Transfers Out to Component Units/Primary Governments					
5520 Special Items – Losses					
5530 Extraordinary Items – Losses					
9300 Interfund Transfers - IN					
9500 Capital Contributions					
9700 Transfers IN From Component Units/Primary Governments					
9920 Special Items – Gains					
9930 Extraordinary Items – Gains					
Change In Net Position	\$46,403			\$46,403	
0002 Net Position - Beginning of Fiscal Year	(2,677,326)			(2,677,326)	
0003 Accounting Changes / Residual Equity Transfers					
Net Position - End Of Year	(\$2,630,923)			(\$2,630,923)	

LEA : 124157802 Tredyffrin-Easttown SD

Printed 11/27/2019 10:37:20 AM

Amounts Expressed in Whole Dollars	<u>Food Service</u> <u>(51)</u>	<u>Child Care Operations</u> <u>(52)</u>	<u>Other Enterprise</u> <u>(58)</u>	<u>TOTAL</u>	<u>Internal Service(60)</u>
Cash Flows From Operating Activities					
0011 Cash Receipts From Users	2,373,796			2,373,796	
0012 Cash Receipts From Assessments Made to Other Funds					
0013 Cash Receipts From Earnings on Investments					
0014 Cash Receipts From Other Operating Revenue					
0015 Cash Payments To Employees For Services	1,716,244			1,716,244	
0016 Cash Payments For Insurance Claims					
0017 Cash Payments To Suppliers For Goods and Services	1,066,606			1,066,606	
0018 Cash Payments For Other Operating Expenses					
Net Cash Provided By (Used For) Operating Activities	(\$409,054)			(\$409,054)	
Cash Flows From Non-Capital Financing Activities					
0021 Receipts From Local Sources - 6000					
0022 Receipts From State Sources - 7000	226,062			226,062	
0023 Receipts From Federal Sources -8000	316,654			316,654	
0024 Notes and Loans Received (Repaid)					
0025 Interest Paid on Notes/Loans - 5100-830					
0026 Operating Transfers In (Out)/Residual Equity Trans					
0027 Operating Transfers In (Out) Primary Government / Comp Unit					
0028 Receipts From Refund of Prior Year Expenditures - 6991					
0029 Special and Extraordinary Gains (losses)					
0030 Receipts from Insurance Recoveries -9990					
Net Cash Prov By (Used for) Non-Capital Financing Activities	\$542,716			\$542,716	
Cash Flows From Capital and Related Financing Activities					
0031 Payments For Fac Acq, Const, and Imp - 4000	(46,052)			(46,052)	
0032 Gain / (Loss) on Sale of Fixed Assets - 6930					
0033 Proceeds From Extended Term Financing - 9200					
0034 Principal Paid on Financing Agreements					
0035 Interest Paid on Financing Agreements - 5100-830					
0036 (Inc) Dec in Contributed Capital					
Net Cash Prov By (Used for) Capital and Related Financing Activities	(\$46,052)			(\$46,052)	
Cash Flows From Investing Activities					
0041 Earnings on Investments - 6500	25,204			25,204	
0042 Purchase of Inv Securities / Deposits to Inv Pools					
0043 Receipts From Investment Pool Withdrawals					
0044 Proceeds from Sale and Maturity of Inv Securities	51,831			51,831	

LEA : 124157802 Tredyffrin-Easttown SD

Printed 11/27/2019 10:37:20 AM

0045 Loans Received (Paid)

Net Cash Prov By (Used for) Investing Activities	\$77,035	\$77,035
--	----------	----------

LEA : 124157802 Tredyffrin-Easttown SD

Printed 11/27/2019 10:37:20 AM

	<u>Food Service</u> <u>(51)</u>	<u>Child Care Operations</u> <u>(52)</u>	<u>Other Enterprise</u> <u>(58)</u>	<u>TOTAL</u>	<u>Internal Service</u> <u>(60)</u>
Net Increase (Decrease) in Cash Flows	164,645			164,645	
0004 Cash and Cash Equivalents Beginning of Year	702,903			702,903	
Cash and Cash Equivalents at Year End	\$867,548			\$867,548	
<hr/>					
Reconciliation of Operating Income (Loss) To Net Cash Provided by (Used For) Operating Activities					
0005 Operating Income (Loss) per REP	(521,517)			(521,517)	
Adjustments					
0051 Depreciation and Net Amortization	79,160			79,160	
0052 Provision for Uncollectible Accounts					
0053 Other Adjustments					
Effect of Changes in Assets, Liabilities, Deferred Outflows and Deferred Inflows					
0054 (Inc) Dec In Accounts Receivable (0120-0150)	(1,159)			(1,159)	
0055 Advances to Other Funds (0160)	37,727			37,727	
0056 (Inc) Dec in Inventories (0170)	(11,999)			(11,999)	
0057 (Inc) Dec in Prepaid Expenses (0180)					
0058 (Inc) Dec in Other Current or Noncurrent Assets					
0064 Deferred Outflows (0910)					
0059 Inc (Dec) in Accounts Payable (0400-0450)					
0060 Inc (Dec) in Accrued Salaries/Benefits (0461)	8,843			8,843	
0065 Inc (Dec) in Net Pension Liabilities (0570)	50,000			50,000	
0066 Inc (Dec) in Other Postemp Benefit Oblig (0560)	5,343			5,343	
0061 Inc (Dec) in Payroll Deductions/Withholding (0462)					
0062 Inc (Dec) in Unearned Revenue (0480)	(55,450)			(55,450)	
0063 Inc (Dec) in Other Current or Noncurrent Liabilities					
0067 Deferred Inflows (0950)					
Total Adjustments	\$112,465			\$112,465	
Cash Provided By (Used for) Total	(\$409,052)			(\$409,052)	

COMBINED STATEMENT OF CASH FLOWS
SCHEDULE OF NONCASH INVESTING, CAPITAL, AND FINANCING ACTIVITIES

Explanation of Transaction and Balance Sheet Effect	Amount
Total	

LEA : 124157802 Tredyffrin-Easttown SD

Printed 11/27/2019 10:37:22 AM

Amounts Expressed in Whole Dollars	<u>Private Purpose Trust</u> <u>(71)</u>	<u>Investment Trust</u> <u>(72)</u>	<u>Pension Trust</u> <u>(73)</u>	<u>Activity</u> <u>(81)</u>
Assets And Deferred Outflows Of Resources				
Assets				
0100 Cash and Cash Equivalents	71,668			363,679
0110 Investments				
0130 Due From Other Funds				
0147 Due from Component Unit				
0150 Other Receivables				
0170 Inventories				
0180 Prepaid Expenses (Expenditures)				
0190 Other Current Assets				
0220 Buildings and Building Improvements (Net)				
0230 Machinery, Equipment and Furniture (Net)				
Total Assets	\$71,668			\$363,679
0910 Deferred Outflows of Resources				
Total Assets And Deferred Outflows Of Resources	\$71,668			\$363,679

LEA : 124157802 Tredyffrin-Easttown SD

Printed 11/27/2019 10:37:22 AM

Amounts Expressed in Whole Dollars		<u>Other Agency</u> <u>(89)</u>	<u>Discrete Component Units</u> <u>(98)</u>	<u>Discrete Component Units</u> <u>(99)</u>	<u>Total Fiduciary Funds</u>
Assets And Deferred Outflows Of Resources					
Assets					
0100	Cash and Cash Equivalents				435,347
0110	Investments				
0130	Due From Other Funds				
0147	Due from Component Unit				
0150	Other Receivables				
0170	Inventories				
0180	Prepaid Expenses (Expenditures)				
0190	Other Current Assets				
0220	Buildings and Building Improvements (Net)				
0230	Machinery, Equipment and Furniture (Net)				
Total Assets					\$435,347
0910	Deferred Outflows of Resources				
Total Assets And Deferred Outflows Of Resources					\$435,347

LEA : 124157802 Tredyffrin-Easttown SD

Printed 11/27/2019 10:37:22 AM

Amounts Expressed in Whole Dollars	<u>Private Purpose Trust</u> <u>(71)</u>	<u>Investment Trust</u> <u>(72)</u>	<u>Pension Trust</u> <u>(73)</u>	<u>Activity</u> <u>(81)</u>
Liabilities, Deferred Inflows Of Resources And Net Position				
Liabilities				
0400 Due to Other Funds				
0411 Due to Other Governments				
0412 Due to Primary Government				
0413 Due to Component Unit				
0420 Accounts Payable				
0430 Contracts Payable				
0450 Short-Term Payables				
0461 Accrued Salaries and Benefits				
0462 Payroll Deductions and Withholding				
0480 Unearned Revenues				
0490 Other Current Liabilities				363,679
Total Liabilities				\$363,679
0950 Deferred Inflows of Resources				
Net Position				
0791 Net Investment in Capital Assets				
0009 Restricted Net Position (0792 – 0798)	71,668			
0799 Unrestricted Net Position				
Total Net Position	\$71,668			
Total Liabilities, Deferred Inflows Of Resources And Net Position	\$71,668			\$363,679

LEA : 124157802 Tredyffrin-Easttown SD

Printed 11/27/2019 10:37:22 AM

Amounts Expressed in Whole Dollars		<u>Other Agency</u> <u>(89)</u>	<u>Discrete Component Units</u> <u>(98)</u>	<u>Discrete Component Units</u> <u>(99)</u>	<u>Total Fiduciary Funds</u>
Liabilities, Deferred Inflows Of Resources And Net Position					
Liabilities					
0400	Due to Other Funds				
0411	Due to Other Governments				
0412	Due to Primary Government				
0413	Due to Component Unit				
0420	Accounts Payable				
0430	Contracts Payable				
0450	Short-Term Payables				
0461	Accrued Salaries and Benefits				
0462	Payroll Deductions and Withholding				
0480	Unearned Revenues				
0490	Other Current Liabilities				363,679
Total Liabilities					\$363,679
0950	Deferred Inflows of Resources				
Net Position					
0791	Net Investment in Capital Assets				
0009	Restricted Net Position (0792 – 0798)				71,668
0799	Unrestricted Net Position				
Total Net Position					\$71,668
Total Liabilities, Deferred Inflows Of Resources And Net Position					\$435,347

LEA : 124157802 Tredyffrin-Easttown SD

Printed 11/27/2019 10:37:25 AM

Amounts Expressed in Whole Dollars	<u>Private Purpose Trust</u> <u>(71)</u>	<u>Investment Trust</u> <u>(72)</u>	<u>Pension Trust</u> <u>(73)</u>	<u>Discrete Component</u> <u>Units</u> <u>(98)</u>	<u>Discrete Component</u> <u>Units</u> <u>(99)</u>	<u>Total Fiduciary</u> <u>Funds</u>
Additions						
0091 Gifts and Contributions	68,000					68,000
0092 Other Additions	1,086					1,086
Deductions						
0093 Scholarships Awarded	35,374					35,374
0094 Other Deductions						
Change In Net Position	\$33,712					\$33,712
0006 Net Position – Beginning of Fiscal Year	37,956					37,956
0007 Net Position Held in Trust for Pension Benefits						
Net Position - End of Fiscal Year	\$71,668					\$71,668

	Revenue Reported In Current Year	Current Year Tax Accrual	Prior Year Tax Accrual	Taxes Collected In Current Year
Revenue from Local Sources				
6111 Current Real Estate Taxes	109,970,863.78			109,970,863.78
6112 Interim Real Estate Taxes	930,465.22			930,465.22
6113 Public Utility Realty Taxes	109,268.60			109,268.60
6153 Current Act 511 Real Estate Transfer Taxes	3,291,878.71			3,291,878.71
6154 Current Act 511 Amusement Taxes	35,913.43			35,913.43
6411 Delinquent Real Estate Taxes	1,200,691.51			1,200,691.51
6500 Earnings on Investments	2,214,419.83			
6700 Revenues from LEA Activities	260,421.00			
6832 Federal IDEA Revenue Received as Pass Through	874,690.00			
6910 Rentals	675,455.00			
6920 Contributions and Donations from Private Sources	600.00			
6999 Other Revenues Not Specified Above	237,614.44			
TOTAL Revenue from Local Sources	\$119,802,281.52			\$115,539,081.25

	Revenue Reported In Current Year			
<u>Revenue from State Sources</u>				
7110 Basic Education Funding	3,627,910.47			
7160 Tuition for Orphans Subsidy	25,681.82			
7271 Special Education funds for School-Aged Pupils	2,597,079.24			
7299 Program Revenues Not Listed Previously in the 7200 Series	1,402.19			
7311 Pupil Transportation Subsidy	1,202,611.92			
7312 Nonpublic and Charter School Pupil Transportation Subsidy	490,105.00			
7320 Rental and Sinking Fund Payments / Building Reimbursement Subsidy	318,160.84			
7330 Health Services (Medical, Dental, Nurse, Act 25)	149,988.27			
7340 State Property Tax Reduction Allocation	2,099,868.70			
7361 School Safety and Security Grants	25,000.00			
7505 Ready to Learn Block Grant	199,614.00			
7810 State Share of Social Security and Medicare Taxes	2,307,799.97			
7820 State Share of Retirement Contributions	9,566,437.43			
TOTAL Revenue from State Sources	\$22,611,659.85			

	Revenue Reported In Current Year			
<u>Revenue from Federal Sources</u>				
8514 NCLB, Title I - Improving the Academic Achievement of the Disadvantaged	278,822.31			
8515 NCLB, Title II - Preparing, Training and Recruiting High Quality Teachers and Principals	110,352.70			
8517 NCLB, Title IV - 21St Century Schools	23,734.00			
8810 School-Based Access Medicaid Reimbursement Program (SBAP) Reimbursements (Access)	350,000.00			
8820 Medical Assistance Reimbursement for Administrative Claiming (Quarterly) Program	33,131.15			
TOTAL Revenue from Federal Sources	\$796,040.16			
TOTAL FROM ALL SOURCES	\$143,209,981.53			\$115,539,081.25

Revenue from Local Sources	119,802,281.52
Revenue from State Sources	22,611,659.85
Revenue from Federal Sources	796,040.16
Other Financing Sources	
TOTAL FROM ALL SOURCES	\$143,209,981.53

LEA : 124157802 Tredyffrin-Easttown SD

Printed 11/27/2019 10:37:36 AM

General Fund (10)	
1000 Instruction	<u>Total</u>
100 <u>Personnel Services – Salaries</u>	
100 Personnel Services – Salaries	40,926,685.47
Total Personnel Services – Salaries	\$40,926,685.47
200 <u>Personnel Services – Employee Benefits</u>	
210 Group Insurance – Contracted Provider	7,734,328.15
220 Social Security Contributions	3,047,082.49
230 PSERS Retirement Contributions	13,507,762.85
250 Unemployment Compensation	33,319.06
260 Workers' Compensation	268,178.02
Total Personnel Services – Employee Benefits	\$24,590,670.57
300 <u>Purchased Professional and Technical Services</u>	
310 Official / Administrative Services	227,066.71
322 Professional Educational Services – Ius	7,128,928.56
323 Professional Educational Services – Other Educational Agencies	3,901.00
329 Professional Educational Services – Other	6,934,715.11
340 Technical Services	5,280.00
Total Purchased Professional and Technical Services	\$14,299,891.38
400 <u>Purchased Property Services</u>	
430 Repairs and Maintenance Services	30,436.28
440 Rentals	434,014.33
Total Purchased Property Services	\$464,450.61
500 <u>Other Purchased Services</u>	
510 Student Transportation Services	156,379.06
530 Communications	25,846.11
550 Printing and Binding	36,366.33
561 Tuition To Other School Districts Within the State	108,444.04
562 Tuition To Pennsylvania Charter Schools	496,181.84
563 Tuition To Nonpublic Schools	88,406.22
564 Tuition To Career and Technology Centers	675,627.00
567 Tuition To Approved Private Schools (APS) and PA Chartered Schools for the Deaf and Blind	1,254,940.62
568 Tuition To Private Residential Rehabilitative Institutions (PRRI) [In-State] and Detention Centers	5,782.44
569 Tuition – Other	1,777,844.40
580 Travel	9,521.29
Total Other Purchased Services	\$4,635,339.35
600 <u>Supplies</u>	
610 General Supplies	754,116.11
640 Books and Periodicals	599,516.31
Total Supplies	\$1,353,632.42
700 <u>Property</u>	
752 Capital Equipment – Original and Additional	18,644.73
758 Capitalized Technology Software - Original	63,480.28
762 Capitalized Equipment - Replacement	199,566.81
768 Capitalized Technology Software - Replacement	135,540.94

LEA : 124157802 Tredyffrin-Easttown SD

Printed 11/27/2019 10:37:36 AM

General Fund (10)

1000 Instruction		<u>Total</u>
Total Property		\$417,232.76
800 <u>Other Objects</u>		
810 Dues and Fees		19,241.60
890 Miscellaneous Expenditures		23,693.00
Total Other Objects		\$42,934.60
Total 1000 Instruction		\$86,730,837.16

LEA : 124157802 Tredyffrin-Easttown SD

Printed 11/27/2019 10:37:36 AM

General Fund (10)

1100 Regular Programs – Elementary / Secondary

	Elementary	Secondary	Federal	Total
100 Personnel Services – Salaries				
100 Personnel Services – Salaries	18,224,439.31	16,664,880.43	373,841.00	35,263,160.74
Total Personnel Services – Salaries	\$18,224,439.31	\$16,664,880.43	\$373,841.00	\$35,263,160.74
200 Personnel Services – Employee Benefits				
210 Group Insurance – Contracted Provider	3,198,990.54	3,540,879.59		6,739,870.13
220 Social Security Contributions	1,379,391.43	1,245,008.67		2,624,400.10
230 PSERS Retirement Contributions	6,144,263.11	5,530,610.76		11,674,873.87
250 Unemployment Compensation	16,569.10	16,569.10		33,138.20
260 Workers' Compensation	115,682.17	115,682.17		231,364.34
Total Personnel Services – Employee Benefits	\$10,854,896.35	\$10,448,750.29		\$21,303,646.64
300 Purchased Professional and Technical Services				
310 Official / Administrative Services	68,154.49	83,662.22		151,816.71
322 Professional Educational Services – Ius	990.50	990.50		1,981.00
323 Professional Educational Services – Other Educational Agencies			3,901.00	3,901.00
329 Professional Educational Services – Other	364,331.50	1,936,374.01		2,300,705.51
340 Technical Services	1,150.00	4,130.00		5,280.00
Total Purchased Professional and Technical Services	\$434,626.49	\$2,025,156.73	\$3,901.00	\$2,463,684.22
400 Purchased Property Services				
430 Repairs and Maintenance Services	8,594.67	21,841.61		30,436.28
440 Rentals	212,874.68	221,139.65		434,014.33
Total Purchased Property Services	\$221,469.35	\$242,981.26		\$464,450.61
500 Other Purchased Services				
510 Student Transportation Services	63,474.28	92,904.78		156,379.06
530 Communications	2,224.76	23,621.35		25,846.11
550 Printing and Binding	3,373.49	32,992.84		36,366.33
562 Tuition To Pennsylvania Charter Schools	248,090.92	248,090.92		496,181.84
580 Travel	4,879.23	4,432.30		9,311.53
Total Other Purchased Services	\$322,042.68	\$402,042.19		\$724,084.87
600 Supplies				
610 General Supplies	339,315.78	369,673.15	500.00	709,488.93
640 Books and Periodicals	261,012.14	305,423.63		566,435.77
Total Supplies	\$600,327.92	\$675,096.78	\$500.00	\$1,275,924.70
700 Property				
752 Capital Equipment – Original and Additional	5,930.43	12,714.30		18,644.73
758 Capitalized Technology Software - Original	26,593.02	35,279.26		61,872.28
762 Capitalized Equipment - Replacement	86,701.50	112,865.31		199,566.81
768 Capitalized Technology Software - Replacement	56,064.12	79,476.82		135,540.94
Total Property	\$175,289.07	\$240,335.69		\$415,624.76
800 Other Objects				
810 Dues and Fees	3,262.00	15,979.60		19,241.60
890 Miscellaneous Expenditures		23,693.00		23,693.00

LEA : 124157802 Tredyffrin-Easttown SD

Printed 11/27/2019 10:37:36 AM

General Fund (10)

1100 Regular Programs – Elementary / Secondary

	<u>Elementary</u>	<u>Secondary</u>	<u>Federal</u>	<u>Total</u>
Total Other Objects	\$3,262.00	\$39,672.60		\$42,934.60
Total 1100 Regular Programs – Elementary / Secondary	\$30,836,353.17	\$30,738,915.97	\$378,242.00	\$61,953,511.14

LEA : 124157802 Tredyffrin-Easttown SD

Printed 11/27/2019 10:37:36 AM

General Fund (10)

1110 Regular Programs

	Elementary	Secondary	Federal	Total
100 <u>Personnel Services – Salaries</u>				
100 Personnel Services – Salaries	18,224,439.31	16,664,880.43		34,889,319.74
Total Personnel Services – Salaries	\$18,224,439.31	\$16,664,880.43		\$34,889,319.74
200 <u>Personnel Services – Employee Benefits</u>				
210 Group Insurance – Contracted Provider	3,198,990.54	3,540,879.59		6,739,870.13
220 Social Security Contributions	1,379,391.43	1,245,008.67		2,624,400.10
230 PSERS Retirement Contributions	6,144,263.11	5,530,610.76		11,674,873.87
250 Unemployment Compensation	16,569.10	16,569.10		33,138.20
260 Workers' Compensation	115,682.17	115,682.17		231,364.34
Total Personnel Services – Employee Benefits	\$10,854,896.35	\$10,448,750.29		\$21,303,646.64
300 <u>Purchased Professional and Technical Services</u>				
310 Official / Administrative Services	68,154.49	83,662.22		151,816.71
322 Professional Educational Services – Ius	990.50	990.50		1,981.00
329 Professional Educational Services – Other	364,331.50	1,936,374.01		2,300,705.51
340 Technical Services	1,150.00	4,130.00		5,280.00
Total Purchased Professional and Technical Services	\$434,626.49	\$2,025,156.73		\$2,459,783.22
400 <u>Purchased Property Services</u>				
430 Repairs and Maintenance Services	8,594.67	21,841.61		30,436.28
440 Rentals	212,874.68	221,139.65		434,014.33
Total Purchased Property Services	\$221,469.35	\$242,981.26		\$464,450.61
500 <u>Other Purchased Services</u>				
510 Student Transportation Services	63,474.28	92,904.78		156,379.06
530 Communications	2,224.76	23,621.35		25,846.11
550 Printing and Binding	3,373.49	32,992.84		36,366.33
562 Tuition To Pennsylvania Charter Schools	248,090.92	248,090.92		496,181.84
580 Travel	4,879.23	4,432.30		9,311.53
Total Other Purchased Services	\$322,042.68	\$402,042.19		\$724,084.87
600 <u>Supplies</u>				
610 General Supplies	339,315.78	369,673.15		708,988.93
640 Books and Periodicals	261,012.14	305,423.63		566,435.77
Total Supplies	\$600,327.92	\$675,096.78		\$1,275,424.70
700 <u>Property</u>				
752 Capital Equipment – Original and Additional	5,930.43	12,714.30		18,644.73
758 Capitalized Technology Software - Original	26,593.02	35,279.26		61,872.28
762 Capitalized Equipment - Replacement	86,701.50	112,865.31		199,566.81
768 Capitalized Technology Software - Replacement	56,064.12	79,476.82		135,540.94
Total Property	\$175,289.07	\$240,335.69		\$415,624.76
800 <u>Other Objects</u>				
810 Dues and Fees	3,262.00	15,979.60		19,241.60
890 Miscellaneous Expenditures		23,693.00		23,693.00
Total Other Objects	\$3,262.00	\$39,672.60		\$42,934.60
Total 1110 Regular Programs	\$30,836,353.17	\$30,738,915.97		\$61,575,269.14

LEA : 124157802 Tredyffrin-Easttown SD

Printed 11/27/2019 10:37:36 AM

General Fund (10)

1190 Federally-Funded Regular Programs	<u>Elementary</u>	<u>Secondary</u>	<u>Federal</u>	<u>Total</u>
100 <u>Personnel Services – Salaries</u>				
100 Personnel Services – Salaries			373,841.00	373,841.00
Total Personnel Services – Salaries			\$373,841.00	\$373,841.00
300 <u>Purchased Professional and Technical Services</u>				
323 Professional Educational Services – Other Educational Agencies			3,901.00	3,901.00
Total Purchased Professional and Technical Services			\$3,901.00	\$3,901.00
600 <u>Supplies</u>				
610 General Supplies			500.00	500.00
Total Supplies			\$500.00	\$500.00
Total 1190 Federally-Funded Regular Programs			\$378,242.00	\$378,242.00

LEA : 124157802 Tredyffrin-Easttown SD

Printed 11/27/2019 10:37:36 AM

General Fund (10)

1200 Special Programs – Elementary / Secondary	Elementary	Secondary	Federal	Total
100 Personnel Services – Salaries				
100 Personnel Services – Salaries	3,136,783.99	2,400,956.53	92,843.59	5,630,584.11
Total Personnel Services – Salaries	\$3,136,783.99	\$2,400,956.53	\$92,843.59	\$5,630,584.11
200 Personnel Services – Employee Benefits				
210 Group Insurance – Contracted Provider	530,146.36	438,212.23	21,528.42	989,887.01
220 Social Security Contributions	234,731.31	178,486.87	6,996.36	420,214.54
230 PSERS Retirement Contributions	1,020,701.20	770,283.09	30,912.07	1,821,896.36
250 Unemployment Compensation	87.21	87.21		174.42
260 Workers' Compensation	18,291.39	18,291.39		36,582.78
Total Personnel Services – Employee Benefits	\$1,803,957.47	\$1,405,360.79	\$59,436.85	\$3,268,755.11
300 Purchased Professional and Technical Services				
310 Official / Administrative Services	37,625.00	37,625.00		75,250.00
322 Professional Educational Services – Ius	3,027,716.64	2,993,690.22	1,105,540.70	7,126,947.56
329 Professional Educational Services – Other	2,317,004.80	2,317,004.80		4,634,009.60
Total Purchased Professional and Technical Services	\$5,382,346.44	\$5,348,320.02	\$1,105,540.70	\$11,836,207.16
500 Other Purchased Services				
561 Tuition To Other School Districts Within the State	53,501.47	53,501.47		107,002.94
563 Tuition To Nonpublic Schools	44,203.11	44,203.11		88,406.22
567 Tuition To Approved Private Schools (APS) and PA Chartered Schools for the Deaf and Blind	627,470.31	627,470.31		1,254,940.62
568 Tuition To Private Residential Rehabilitative Institutions (PRRI) [In-State] and Detention Centers	2,891.22	2,891.22		5,782.44
569 Tuition – Other	888,922.20	888,922.20		1,777,844.40
580 Travel	104.88	104.88		209.76
Total Other Purchased Services	\$1,617,093.19	\$1,617,093.19		\$3,234,186.38
600 Supplies				
610 General Supplies	26,097.84	18,529.34		44,627.18
640 Books and Periodicals	16,582.60	16,497.94		33,080.54
Total Supplies	\$42,680.44	\$35,027.28		\$77,707.72
700 Property				
758 Capitalized Technology Software - Original	804.00	804.00		1,608.00
Total Property	\$804.00	\$804.00		\$1,608.00
Total 1200 Special Programs – Elementary / Secondary	\$11,983,665.53	\$10,807,561.81	\$1,257,821.14	\$24,049,048.48

LEA : 124157802 Tredyffrin-Easttown SD

Printed 11/27/2019 10:37:36 AM

General Fund (10)				
1210 Life Skills Support				
	<u>Elementary</u>	<u>Secondary</u>	<u>Federal</u>	<u>Total</u>
100 <u>Personnel Services – Salaries</u>				
100 Personnel Services – Salaries			77,565.62	77,565.62
Total Personnel Services – Salaries			\$77,565.62	\$77,565.62
200 <u>Personnel Services – Employee Benefits</u>				
210 Group Insurance – Contracted Provider			21,528.42	21,528.42
220 Social Security Contributions			5,827.58	5,827.58
230 PSERS Retirement Contributions			25,796.80	25,796.80
250 Unemployment Compensation	87.21	87.21		174.42
260 Workers' Compensation	18,291.39	18,291.39		36,582.78
Total Personnel Services – Employee Benefits	\$18,378.60	\$18,378.60	\$53,152.80	\$89,910.00
300 <u>Purchased Professional and Technical Services</u>				
329 Professional Educational Services – Other	2,317,004.80	2,317,004.80		4,634,009.60
Total Purchased Professional and Technical Services	\$2,317,004.80	\$2,317,004.80		\$4,634,009.60
500 <u>Other Purchased Services</u>				
561 Tuition To Other School Districts Within the State	53,501.47	53,501.47		107,002.94
563 Tuition To Nonpublic Schools	44,203.11	44,203.11		88,406.22
567 Tuition To Approved Private Schools (APS) and PA Chartered Schools for the Deaf and Blind	486,418.91	486,418.91		972,837.82
569 Tuition – Other	888,922.20	888,922.20		1,777,844.40
Total Other Purchased Services	\$1,473,045.69	\$1,473,045.69		\$2,946,091.38
Total 1210 Life Skills Support	\$3,808,429.09	\$3,808,429.09	\$130,718.42	\$7,747,576.60

LEA : 124157802 Tredyffrin-Easttown SD

Printed 11/27/2019 10:37:36 AM

General Fund (10)

1220 Sensory Support

	<u>Elementary</u>	<u>Secondary</u>	<u>Federal</u>	<u>Total</u>
100 <u>Personnel Services – Salaries</u>				
100 Personnel Services – Salaries	224,285.88	28,917.03		253,202.91
Total Personnel Services – Salaries	\$224,285.88	\$28,917.03		\$253,202.91
200 <u>Personnel Services – Employee Benefits</u>				
210 Group Insurance – Contracted Provider	44,808.62	1,000.00		45,808.62
220 Social Security Contributions	16,510.20	2,218.90		18,729.10
230 PSERS Retirement Contributions	74,822.47	9,670.89		84,493.36
Total Personnel Services – Employee Benefits	\$136,141.29	\$12,889.79		\$149,031.08
600 <u>Supplies</u>				
610 General Supplies	369.90			369.90
640 Books and Periodicals	34.66			34.66
Total Supplies	\$404.56			\$404.56
Total 1220 Sensory Support	\$360,831.73	\$41,806.82		\$402,638.55

LEA : 124157802 Tredyffrin-Easttown SD

Printed 11/27/2019 10:37:36 AM

General Fund (10)

1240 Academic Support

	Elementary	Secondary	Federal	Total
100 <u>Personnel Services – Salaries</u>				
100 Personnel Services – Salaries	2,912,498.11	2,372,039.50	15,277.97	5,299,815.58
Total Personnel Services – Salaries	\$2,912,498.11	\$2,372,039.50	\$15,277.97	\$5,299,815.58
200 <u>Personnel Services – Employee Benefits</u>				
210 Group Insurance – Contracted Provider	485,337.74	437,212.23		922,549.97
220 Social Security Contributions	218,221.11	176,267.97	1,168.78	395,657.86
230 PSERS Retirement Contributions	945,878.73	760,612.20	5,115.27	1,711,606.20
Total Personnel Services – Employee Benefits	\$1,649,437.58	\$1,374,092.40	\$6,284.05	\$3,029,814.03
300 <u>Purchased Professional and Technical Services</u>				
310 Official / Administrative Services	37,625.00	37,625.00		75,250.00
Total Purchased Professional and Technical Services	\$37,625.00	\$37,625.00		\$75,250.00
500 <u>Other Purchased Services</u>				
580 Travel	104.88	104.88		209.76
Total Other Purchased Services	\$104.88	\$104.88		\$209.76
600 <u>Supplies</u>				
610 General Supplies	25,727.94	18,529.34		44,257.28
640 Books and Periodicals	16,547.94	16,497.94		33,045.88
Total Supplies	\$42,275.88	\$35,027.28		\$77,303.16
700 <u>Property</u>				
758 Capitalized Technology Software - Original	804.00	804.00		1,608.00
Total Property	\$804.00	\$804.00		\$1,608.00
Total 1240 Academic Support	\$4,642,745.45	\$3,819,693.06	\$21,562.02	\$8,484,000.53

LEA : 124157802 Tredyffrin-Easttown SD

Printed 11/27/2019 10:37:36 AM

General Fund (10)				
1241 Learning Support – Public	<u>Elementary</u>	<u>Secondary</u>	<u>Federal</u>	<u>Total</u>
100 <u>Personnel Services – Salaries</u>				
100 Personnel Services – Salaries	2,086,061.42	1,947,543.71	15,277.97	4,048,883.10
Total Personnel Services – Salaries	\$2,086,061.42	\$1,947,543.71	\$15,277.97	\$4,048,883.10
200 <u>Personnel Services – Employee Benefits</u>				
210 Group Insurance – Contracted Provider	336,406.14	357,869.64		694,275.78
220 Social Security Contributions	156,483.07	144,572.09	1,168.78	302,223.94
230 PSERS Retirement Contributions	670,130.53	618,880.91	5,115.27	1,294,126.71
Total Personnel Services – Employee Benefits	\$1,163,019.74	\$1,121,322.64	\$6,284.05	\$2,290,626.43
300 <u>Purchased Professional and Technical Services</u>				
310 Official / Administrative Services	37,625.00	37,625.00		75,250.00
Total Purchased Professional and Technical Services	\$37,625.00	\$37,625.00		\$75,250.00
600 <u>Supplies</u>				
610 General Supplies	21,661.41	14,462.81		36,124.22
640 Books and Periodicals	16,233.97	16,183.97		32,417.94
Total Supplies	\$37,895.38	\$30,646.78		\$68,542.16
700 <u>Property</u>				
758 Capitalized Technology Software - Original	804.00	804.00		1,608.00
Total Property	\$804.00	\$804.00		\$1,608.00
Total 1241 Learning Support – Public	\$3,325,405.54	\$3,137,942.13	\$21,562.02	\$6,484,909.69

LEA : 124157802 Tredyffrin-Easttown SD

Printed 11/27/2019 10:37:36 AM

General Fund (10)

1243 Gifted Support

	<u>Elementary</u>	<u>Secondary</u>	<u>Federal</u>	<u>Total</u>
100 <u>Personnel Services – Salaries</u>				
100 Personnel Services – Salaries	826,436.69	424,495.79		1,250,932.48
Total Personnel Services – Salaries	\$826,436.69	\$424,495.79		\$1,250,932.48
200 <u>Personnel Services – Employee Benefits</u>				
210 Group Insurance – Contracted Provider	148,931.60	79,342.59		228,274.19
220 Social Security Contributions	61,738.04	31,695.88		93,433.92
230 PSERS Retirement Contributions	275,748.20	141,731.29		417,479.49
Total Personnel Services – Employee Benefits	\$486,417.84	\$252,769.76		\$739,187.60
500 <u>Other Purchased Services</u>				
580 Travel	104.88	104.88		209.76
Total Other Purchased Services	\$104.88	\$104.88		\$209.76
600 <u>Supplies</u>				
610 General Supplies	4,066.53	4,066.53		8,133.06
640 Books and Periodicals	313.97	313.97		627.94
Total Supplies	\$4,380.50	\$4,380.50		\$8,761.00
Total 1243 Gifted Support	\$1,317,339.91	\$681,750.93		\$1,999,090.84

LEA : 124157802 Tredyffrin-Easttown SD

Printed 11/27/2019 10:37:36 AM

General Fund (10)

1280 Early Intervention Support

300 Purchased Professional and Technical Services

322 Professional Educational Services – lus	Elementary	Secondary	Federal	Total
	34,026.42			34,026.42
Total Purchased Professional and Technical Services	\$34,026.42			\$34,026.42
Total 1280 Early Intervention Support	\$34,026.42			\$34,026.42

LEA : 124157802 Tredyffrin-Easttown SD

Printed 11/27/2019 10:37:36 AM

General Fund (10)

1290 Special Programs - Other Support	<u>Elementary</u>	<u>Secondary</u>	<u>Federal</u>	<u>Total</u>
300 <u>Purchased Professional and Technical Services</u>				
322 Professional Educational Services – lus	2,993,690.22	2,993,690.22	1,105,540.70	7,092,921.14
Total Purchased Professional and Technical Services	\$2,993,690.22	\$2,993,690.22	\$1,105,540.70	\$7,092,921.14
500 <u>Other Purchased Services</u>				
567 Tuition To Approved Private Schools (APS) and PA Chartered Schools for the Deaf and Blind	141,051.40	141,051.40		282,102.80
568 Tuition To Private Residential Rehabilitative Institutions (PRRI) [In-State] and Detention Centers	2,891.22	2,891.22		5,782.44
Total Other Purchased Services	\$143,942.62	\$143,942.62		\$287,885.24
Total 1290 Special Programs - Other Support	\$3,137,632.84	\$3,137,632.84	\$1,105,540.70	\$7,380,806.38

LEA : 124157802 Tredyffrin-Easttown SD

Printed 11/27/2019 10:37:36 AM

General Fund (10)

1300 Vocational Education

500 Other Purchased Services

	<u>Elementary</u>	<u>Secondary</u>	<u>Federal</u>	<u>Total</u>
564 Tuition To Career and Technology Centers		675,627.00		675,627.00
Total Other Purchased Services		\$675,627.00		\$675,627.00
Total 1300 Vocational Education		\$675,627.00		\$675,627.00

LEA : 124157802 Tredyffrin-Easttown SD

Printed 11/27/2019 10:37:36 AM

General Fund (10)				
1400 Other Instructional Programs – Elementary / Secondary	<u>Elementary</u>	<u>Secondary</u>	<u>Federal</u>	<u>Total</u>
100 <u>Personnel Services – Salaries</u>				
100 Personnel Services – Salaries	3,465.00	29,475.62		32,940.62
Total Personnel Services – Salaries	\$3,465.00	\$29,475.62		\$32,940.62
200 <u>Personnel Services – Employee Benefits</u>				
210 Group Insurance – Contracted Provider		4,571.01		4,571.01
220 Social Security Contributions	260.81	2,207.04		2,467.85
230 PSERS Retirement Contributions	1,148.61	9,844.01		10,992.62
250 Unemployment Compensation		6.44		6.44
260 Workers' Compensation		230.90		230.90
Total Personnel Services – Employee Benefits	\$1,409.42	\$16,859.40		\$18,268.82
500 <u>Other Purchased Services</u>				
561 Tuition To Other School Districts Within the State	720.55	720.55		1,441.10
Total Other Purchased Services	\$720.55	\$720.55		\$1,441.10
Total 1400 Other Instructional Programs – Elementary / Secondary	\$5,594.97	\$47,055.57		\$52,650.54

LEA : 124157802 Tredyffrin-Easttown SD

Printed 11/27/2019 10:37:36 AM

General Fund (10)

1410 Drivers' Education

	<u>Elementary</u>	<u>Secondary</u>	<u>Federal</u>	<u>Total</u>
100 <u>Personnel Services – Salaries</u>				
100 Personnel Services – Salaries		26,010.62		26,010.62
Total Personnel Services – Salaries		\$26,010.62		\$26,010.62
200 <u>Personnel Services – Employee Benefits</u>				
210 Group Insurance – Contracted Provider		4,571.01		4,571.01
220 Social Security Contributions		1,946.23		1,946.23
230 PSERS Retirement Contributions		8,695.40		8,695.40
250 Unemployment Compensation		6.44		6.44
260 Workers' Compensation		230.90		230.90
Total Personnel Services – Employee Benefits		\$15,449.98		\$15,449.98
Total 1410 Drivers' Education		\$41,460.60		\$41,460.60

LEA : 124157802 Tredyffrin-Easttown SD

Printed 11/27/2019 10:37:36 AM

General Fund (10)

1430 Homebound Instruction	<u>Elementary</u>	<u>Secondary</u>	<u>Federal</u>	<u>Total</u>
100 <u>Personnel Services – Salaries</u>				
100 Personnel Services – Salaries	3,465.00	3,465.00		6,930.00
Total Personnel Services – Salaries	\$3,465.00	\$3,465.00		\$6,930.00
200 <u>Personnel Services – Employee Benefits</u>				
220 Social Security Contributions	260.81	260.81		521.62
230 PSERS Retirement Contributions	1,148.61	1,148.61		2,297.22
Total Personnel Services – Employee Benefits	\$1,409.42	\$1,409.42		\$2,818.84
Total 1430 Homebound Instruction	\$4,874.42	\$4,874.42		\$9,748.84

LEA : 124157802 Tredyffrin-Easttown SD

Printed 11/27/2019 10:37:36 AM

General Fund (10)

1440 Alternative Regular Education Programs	<u>Elementary</u>	<u>Secondary</u>	<u>Federal</u>	<u>Total</u>
500 <u>Other Purchased Services</u>				
561 Tuition To Other School Districts Within the State	720.55	720.55		1,441.10
Total Other Purchased Services	\$720.55	\$720.55		\$1,441.10
Total 1440 Alternative Regular Education Programs	\$720.55	\$720.55		\$1,441.10

LEA : 124157802 Tredyffrin-Easttown SD

Printed 11/27/2019 10:37:36 AM

General Fund (10)

1441 Adjudicated / Court-Placed Programs	<u>Elementary</u>	<u>Secondary</u>	<u>Federal</u>	<u>Total</u>
500 <u>Other Purchased Services</u>				
561 Tuition To Other School Districts Within the State	720.55	720.55		1,441.10
Total Other Purchased Services	\$720.55	\$720.55		\$1,441.10
Total 1441 Adjudicated / Court-Placed Programs	\$720.55	\$720.55		\$1,441.10

LEA : 124157802 Tredyffrin-Easttown SD

Printed 11/27/2019 10:37:41 AM

General Fund (10)

2000 Support Services

Total

100 Personnel Services – Salaries	
100 Personnel Services – Salaries	17,769,897.41
Total Personnel Services – Salaries	\$17,769,897.41
200 Personnel Services – Employee Benefits	
210 Group Insurance – Contracted Provider	3,176,333.61
220 Social Security Contributions	1,256,440.52
230 PSERS Retirement Contributions	5,607,782.72
240 Tuition Reimbursement	190,691.42
250 Unemployment Compensation	1,031.49
260 Workers' Compensation	116,547.65
291 Other Retirement Plans	21,723.48
Total Personnel Services – Employee Benefits	\$10,370,550.89
300 Purchased Professional and Technical Services	
310 Official / Administrative Services	393,474.36
322 Professional Educational Services – Ius	96,774.82
329 Professional Educational Services – Other	373,007.66
330 Other Professional Services	590,575.38
340 Technical Services	321,873.41
350 Security / Safety Services	4,605.50
Total Purchased Professional and Technical Services	\$1,780,311.13
400 Purchased Property Services	
410 Cleaning Services	89,804.77
420 Utility Services	1,073,472.95
430 Repairs and Maintenance Services	1,459,303.88
440 Rentals	201,450.63
Total Purchased Property Services	\$2,824,032.23
500 Other Purchased Services	
513 Contracted Carriers	6,365,966.64
516 Student Transportation Services From the IU	8,569.87
520 Insurance – General	328,645.40
522 Automotive Liability Insurance	69,529.00
523 General Property and Liability Insurance	61,197.25
530 Communications	244,188.14
541 Advertising Related to Federal Grant Awards	22,461.46
550 Printing and Binding	30,824.76
580 Travel	73,043.52
595 IU Payments By Withholding	70,564.88
Total Other Purchased Services	\$7,274,990.92
600 Supplies	
610 General Supplies	950,546.14
620 Energy	916,091.89
630 Food	3,730.00
640 Books and Periodicals	598,417.10

LEA : 124157802 Tredyffrin-Easttown SD

Printed 11/27/2019 10:37:41 AM

General Fund (10)

2000 Support Services

	<u>Total</u>
Total Supplies	\$2,468,785.13
700 <u>Property</u>	
752 Capital Equipment – Original and Additional	92,740.46
758 Capitalized Technology Software - Original	313,138.45
762 Capitalized Equipment - Replacement	97,434.40
768 Capitalized Technology Software - Replacement	2,442.32
Total Property	\$505,755.63
800 <u>Other Objects</u>	
810 Dues and Fees	67,201.69
Total Other Objects	\$67,201.69
Total 2000 Support Services	\$43,061,525.03

LEA : 124157802 Tredyffrin-Easttown SD

Printed 11/27/2019 10:37:41 AM

General Fund (10)				
2100 Support Services – Students	<u>Elementary</u>	<u>Secondary</u>	<u>Federal</u>	<u>Total</u>
100 <u>Personnel Services – Salaries</u>				
100 Personnel Services – Salaries	1,330,200.58	1,931,940.47		3,296,183.75
Total Personnel Services – Salaries	\$1,330,200.58	\$1,931,940.47		\$3,296,183.75
200 <u>Personnel Services – Employee Benefits</u>				
210 Group Insurance – Contracted Provider	194,193.43	282,278.31		485,732.62
220 Social Security Contributions	96,099.16	140,860.48		239,526.94
230 PSERS Retirement Contributions	432,815.42	632,566.90		1,076,773.04
250 Unemployment Compensation	81.67	81.67		163.34
260 Workers' Compensation	10,778.23	10,778.23		21,556.46
Total Personnel Services – Employee Benefits	\$733,967.91	\$1,066,565.59		\$1,823,752.40
300 <u>Purchased Professional and Technical Services</u>				
322 Professional Educational Services – lus	41,598.66	41,598.66		83,197.32
340 Technical Services	2,223.77	2,223.77		4,447.54
Total Purchased Professional and Technical Services	\$43,822.43	\$43,822.43		\$87,644.86
400 <u>Purchased Property Services</u>				
430 Repairs and Maintenance Services		3,662.45		3,662.45
Total Purchased Property Services		\$3,662.45		\$3,662.45
500 <u>Other Purchased Services</u>				
550 Printing and Binding	2,528.34	2,528.34		5,056.68
580 Travel	5,777.21	5,777.21		11,554.42
Total Other Purchased Services	\$8,305.55	\$8,305.55		\$16,611.10
600 <u>Supplies</u>				
610 General Supplies	13,009.32	21,007.17		34,016.49
640 Books and Periodicals	2,185.98	8,897.88		11,083.86
Total Supplies	\$15,195.30	\$29,905.05		\$45,100.35
700 <u>Property</u>				
758 Capitalized Technology Software - Original		2,512.55		2,512.55
Total Property		\$2,512.55		\$2,512.55
800 <u>Other Objects</u>				
810 Dues and Fees	150.00	945.00		1,095.00
Total Other Objects	\$150.00	\$945.00		\$1,095.00
Total 2100 Support Services – Students	\$2,131,641.77	\$3,087,659.09		\$5,276,562.46

LEA : 124157802 Tredyffrin-Easttown SD

Printed 11/27/2019 10:37:41 AM

General Fund (10)				
2110 Supervision of Student Services	<u>Elementary</u>	<u>Secondary</u>	<u>Federal</u>	<u>Total</u>
100 <u>Personnel Services – Salaries</u>				
100 Personnel Services – Salaries	367,368.53	417,898.23		785,266.76
Total Personnel Services – Salaries	\$367,368.53	\$417,898.23		\$785,266.76
200 <u>Personnel Services – Employee Benefits</u>				
210 Group Insurance – Contracted Provider	27,066.64	40,990.06		68,056.70
220 Social Security Contributions	24,642.58	28,400.42		53,043.00
230 PSERS Retirement Contributions	111,295.09	128,209.84		239,504.93
250 Unemployment Compensation	81.67	81.67		163.34
260 Workers' Compensation	10,778.23	10,778.23		21,556.46
Total Personnel Services – Employee Benefits	\$173,864.21	\$208,460.22		\$382,324.43
300 <u>Purchased Professional and Technical Services</u>				
340 Technical Services	2,223.77	2,223.77		4,447.54
Total Purchased Professional and Technical Services	\$2,223.77	\$2,223.77		\$4,447.54
500 <u>Other Purchased Services</u>				
550 Printing and Binding	2,528.34	2,528.34		5,056.68
580 Travel	5,734.39	5,734.39		11,468.78
Total Other Purchased Services	\$8,262.73	\$8,262.73		\$16,525.46
600 <u>Supplies</u>				
610 General Supplies	2,215.02	2,215.02		4,430.04
Total Supplies	\$2,215.02	\$2,215.02		\$4,430.04
800 <u>Other Objects</u>				
810 Dues and Fees	150.00	150.00		300.00
Total Other Objects	\$150.00	\$150.00		\$300.00
Total 2110 Supervision of Student Services	\$554,084.26	\$639,209.97		\$1,193,294.23

LEA : 124157802 Tredyffrin-Easttown SD

Printed 11/27/2019 10:37:41 AM

General Fund (10)

2111 Supervision of Student Services – Head of Component	Elementary	Secondary	Federal	Total
100 <u>Personnel Services – Salaries</u>				
100 Personnel Services – Salaries	367,368.53	417,898.23		785,266.76
Total Personnel Services – Salaries	\$367,368.53	\$417,898.23		\$785,266.76
200 <u>Personnel Services – Employee Benefits</u>				
210 Group Insurance – Contracted Provider	27,066.64	40,990.06		68,056.70
220 Social Security Contributions	24,642.58	28,400.42		53,043.00
230 PSERS Retirement Contributions	111,295.09	128,209.84		239,504.93
250 Unemployment Compensation	81.67	81.67		163.34
260 Workers' Compensation	10,778.23	10,778.23		21,556.46
Total Personnel Services – Employee Benefits	\$173,864.21	\$208,460.22		\$382,324.43
300 <u>Purchased Professional and Technical Services</u>				
340 Technical Services	2,223.77	2,223.77		4,447.54
Total Purchased Professional and Technical Services	\$2,223.77	\$2,223.77		\$4,447.54
500 <u>Other Purchased Services</u>				
550 Printing and Binding	2,528.34	2,528.34		5,056.68
580 Travel	5,734.39	5,734.39		11,468.78
Total Other Purchased Services	\$8,262.73	\$8,262.73		\$16,525.46
600 <u>Supplies</u>				
610 General Supplies	2,215.02	2,215.02		4,430.04
Total Supplies	\$2,215.02	\$2,215.02		\$4,430.04
800 <u>Other Objects</u>				
810 Dues and Fees	150.00	150.00		300.00
Total Other Objects	\$150.00	\$150.00		\$300.00
Total 2111 Supervision of Student Services – Head of Component	\$554,084.26	\$639,209.97		\$1,193,294.23

LEA : 124157802 Tredyffrin-Easttown SD

Printed 11/27/2019 10:37:41 AM

General Fund (10)

2120 Guidance Services	Elementary	Secondary	Federal	Total
100 <u>Personnel Services – Salaries</u>				
100 Personnel Services – Salaries	962,832.05	1,514,042.24		2,476,874.29
Total Personnel Services – Salaries	\$962,832.05	\$1,514,042.24		\$2,476,874.29
200 <u>Personnel Services – Employee Benefits</u>				
210 Group Insurance – Contracted Provider	167,126.79	241,288.25		408,415.04
220 Social Security Contributions	71,456.58	112,460.06		183,916.64
230 PSERS Retirement Contributions	321,520.33	504,357.06		825,877.39
Total Personnel Services – Employee Benefits	\$560,103.70	\$858,105.37		\$1,418,209.07
300 <u>Purchased Professional and Technical Services</u>				
322 Professional Educational Services – Ius	41,598.66	41,598.66		83,197.32
Total Purchased Professional and Technical Services	\$41,598.66	\$41,598.66		\$83,197.32
400 <u>Purchased Property Services</u>				
430 Repairs and Maintenance Services		3,662.45		3,662.45
Total Purchased Property Services		\$3,662.45		\$3,662.45
600 <u>Supplies</u>				
610 General Supplies	1,983.86	9,981.71		11,965.57
640 Books and Periodicals	2,185.98	8,897.88		11,083.86
Total Supplies	\$4,169.84	\$18,879.59		\$23,049.43
700 <u>Property</u>				
758 Capitalized Technology Software - Original		2,512.55		2,512.55
Total Property		\$2,512.55		\$2,512.55
800 <u>Other Objects</u>				
810 Dues and Fees		795.00		795.00
Total Other Objects		\$795.00		\$795.00
Total 2120 Guidance Services	\$1,568,704.25	\$2,439,595.86		\$4,008,300.11

LEA : 124157802 Tredyffrin-Easttown SD

Printed 11/27/2019 10:37:41 AM

General Fund (10)

2150 Speech Pathology and Audiology Services

	<u>Elementary</u>	<u>Secondary</u>	<u>Federal</u>	<u>Total</u>
500 <u>Other Purchased Services</u>				
580 Travel	42.82	42.82		85.64
Total Other Purchased Services	\$42.82	\$42.82		\$85.64
600 <u>Supplies</u>				
610 General Supplies	8,810.44	8,810.44		17,620.88
Total Supplies	\$8,810.44	\$8,810.44		\$17,620.88
Total 2150 Speech Pathology and Audiology Services	\$8,853.26	\$8,853.26		\$17,706.52

LEA : 124157802 Tredyffrin-Easttown SD

Printed 11/27/2019 10:37:41 AM

General Fund (10)

2170 Student Accounting Services

Elementary Secondary Federal Total

100 Personnel Services – Salaries

100 Personnel Services – Salaries 34,042.70

Total Personnel Services – Salaries \$34,042.70

200 Personnel Services – Employee Benefits

210 Group Insurance – Contracted Provider 9,260.88

220 Social Security Contributions 2,567.30

230 PSERS Retirement Contributions 11,390.72

Total Personnel Services – Employee Benefits \$23,218.90

Total 2170 Student Accounting Services \$57,261.60

LEA : 124157802 Tredyffrin-Easttown SD

Printed 11/27/2019 10:37:41 AM

General Fund (10)				
2200 Support Services – Instructional Staff	<u>Elementary</u>	<u>Secondary</u>	<u>Federal</u>	<u>Total</u>
100 <u>Personnel Services – Salaries</u>				
100 Personnel Services – Salaries	1,298,561.51	1,040,791.64		2,339,353.15
Total Personnel Services – Salaries	\$1,298,561.51	\$1,040,791.64		\$2,339,353.15
200 <u>Personnel Services – Employee Benefits</u>				
210 Group Insurance – Contracted Provider	138,442.78	79,547.83		217,990.61
220 Social Security Contributions	89,136.61	70,324.65		159,461.26
230 PSERS Retirement Contributions	404,979.69	328,150.15		733,129.84
240 Tuition Reimbursement	95,345.71	95,345.71		190,691.42
250 Unemployment Compensation	76.13	76.13		152.26
260 Workers' Compensation	7,528.09	7,528.09		15,056.18
Total Personnel Services – Employee Benefits	\$735,509.01	\$580,972.56		\$1,316,481.57
300 <u>Purchased Professional and Technical Services</u>				
310 Official / Administrative Services			34,667.00	34,667.00
322 Professional Educational Services – Ius	3,750.00	3,750.00		7,500.00
340 Technical Services	750.00	750.00		1,500.00
Total Purchased Professional and Technical Services	\$4,500.00	\$4,500.00	\$34,667.00	\$43,667.00
400 <u>Purchased Property Services</u>				
430 Repairs and Maintenance Services	924.00	352.00		1,276.00
Total Purchased Property Services	\$924.00	\$352.00		\$1,276.00
500 <u>Other Purchased Services</u>				
550 Printing and Binding	7,221.51	7,221.51		14,443.02
580 Travel	9,126.13	9,126.13		18,252.26
Total Other Purchased Services	\$16,347.64	\$16,347.64		\$32,695.28
600 <u>Supplies</u>				
610 General Supplies	18,564.48	27,009.02		45,573.50
640 Books and Periodicals	49,770.49	85,412.68		135,183.17
Total Supplies	\$68,334.97	\$112,421.70		\$180,756.67
700 <u>Property</u>				
752 Capital Equipment – Original and Additional		3,076.45		3,076.45
758 Capitalized Technology Software - Original	1,328.87	7,933.46		9,262.33
762 Capitalized Equipment - Replacement		15,427.97		15,427.97
768 Capitalized Technology Software - Replacement		1,528.32		1,528.32
Total Property	\$1,328.87	\$27,966.20		\$29,295.07
800 <u>Other Objects</u>				
810 Dues and Fees	8,849.00	9,209.00		18,058.00
Total Other Objects	\$8,849.00	\$9,209.00		\$18,058.00
Total 2200 Support Services – Instructional Staff	\$2,134,355.00	\$1,792,560.74	\$34,667.00	\$3,961,582.74

LEA : 124157802 Tredyffrin-Easttown SD

Printed 11/27/2019 10:37:41 AM

General Fund (10)

2220 Technology Support Services	<u>Elementary</u>	<u>Secondary</u>	<u>Federal</u>	<u>Total</u>
600 <u>Supplies</u>				
610 General Supplies	5,368.68			5,368.68
Total Supplies	\$5,368.68			\$5,368.68
700 <u>Property</u>				
758 Capitalized Technology Software - Original	581.37			581.37
Total Property	\$581.37			\$581.37
Total 2220 Technology Support Services	\$5,950.05			\$5,950.05

LEA : 124157802 Tredyffrin-Easttown SD

Printed 11/27/2019 10:37:41 AM

General Fund (10)

2230 Educational Television Services	Elementary	Secondary	Federal	Total
100 <u>Personnel Services – Salaries</u>				
100 Personnel Services – Salaries		80,554.10		80,554.10
Total Personnel Services – Salaries		\$80,554.10		\$80,554.10
200 <u>Personnel Services – Employee Benefits</u>				
210 Group Insurance – Contracted Provider		2,035.29		2,035.29
220 Social Security Contributions		6,162.54		6,162.54
230 PSERS Retirement Contributions		26,929.34		26,929.34
250 Unemployment Compensation	76.13	76.13		152.26
260 Workers' Compensation	7,528.09	7,528.09		15,056.18
Total Personnel Services – Employee Benefits	\$7,604.22	\$42,731.39		\$50,335.61
600 <u>Supplies</u>				
610 General Supplies		8,981.74		8,981.74
640 Books and Periodicals		595.88		595.88
Total Supplies		\$9,577.62		\$9,577.62
700 <u>Property</u>				
752 Capital Equipment – Original and Additional		3,076.45		3,076.45
758 Capitalized Technology Software - Original		7,185.96		7,185.96
Total Property		\$10,262.41		\$10,262.41
800 <u>Other Objects</u>				
810 Dues and Fees		300.00		300.00
Total Other Objects		\$300.00		\$300.00
Total 2230 Educational Television Services	\$7,604.22	\$143,425.52		\$151,029.74

LEA : 124157802 Tredyffrin-Easttown SD

Printed 11/27/2019 10:37:41 AM

General Fund (10)				
2250 School Library Services	<u>Elementary</u>	<u>Secondary</u>	<u>Federal</u>	<u>Total</u>
100 <u>Personnel Services – Salaries</u>				
100 Personnel Services – Salaries	632,821.16	294,497.19		927,318.35
Total Personnel Services – Salaries	\$632,821.16	\$294,497.19		\$927,318.35
200 <u>Personnel Services – Employee Benefits</u>				
210 Group Insurance – Contracted Provider	96,401.11	35,470.87		131,871.98
220 Social Security Contributions	47,006.73	22,032.23		69,038.96
230 PSERS Retirement Contributions	202,211.00	98,452.12		300,663.12
Total Personnel Services – Employee Benefits	\$345,618.84	\$155,955.22		\$501,574.06
400 <u>Purchased Property Services</u>				
430 Repairs and Maintenance Services	924.00	352.00		1,276.00
Total Purchased Property Services	\$924.00	\$352.00		\$1,276.00
600 <u>Supplies</u>				
610 General Supplies	8,105.81	12,937.29		21,043.10
640 Books and Periodicals	49,047.95	84,094.26		133,142.21
Total Supplies	\$57,153.76	\$97,031.55		\$154,185.31
700 <u>Property</u>				
758 Capitalized Technology Software - Original	747.50	747.50		1,495.00
762 Capitalized Equipment - Replacement		15,427.97		15,427.97
768 Capitalized Technology Software - Replacement		1,528.32		1,528.32
Total Property	\$747.50	\$17,703.79		\$18,451.29
800 <u>Other Objects</u>				
810 Dues and Fees		60.00		60.00
Total Other Objects		\$60.00		\$60.00
Total 2250 School Library Services	\$1,037,265.26	\$565,599.75		\$1,602,865.01

LEA : 124157802 Tredyffrin-Easttown SD

Printed 11/27/2019 10:37:41 AM

General Fund (10)				
2260 Instruction and Curriculum Development Services	<u>Elementary</u>	<u>Secondary</u>	<u>Federal</u>	<u>Total</u>
100 <u>Personnel Services – Salaries</u>				
100 Personnel Services – Salaries	566,798.09	566,798.09		1,133,596.18
Total Personnel Services – Salaries	\$566,798.09	\$566,798.09		\$1,133,596.18
200 <u>Personnel Services – Employee Benefits</u>				
210 Group Insurance – Contracted Provider	42,041.67	42,041.67		84,083.34
220 Social Security Contributions	36,686.94	36,686.94		73,373.88
230 PSERS Retirement Contributions	173,943.18	173,943.18		347,886.36
Total Personnel Services – Employee Benefits	\$252,671.79	\$252,671.79		\$505,343.58
500 <u>Other Purchased Services</u>				
550 Printing and Binding	2,834.10	2,834.10		5,668.20
580 Travel	1,758.19	1,758.19		3,516.38
Total Other Purchased Services	\$4,592.29	\$4,592.29		\$9,184.58
600 <u>Supplies</u>				
610 General Supplies	716.11	716.11		1,432.22
Total Supplies	\$716.11	\$716.11		\$1,432.22
800 <u>Other Objects</u>				
810 Dues and Fees	1,717.00	1,717.00		3,434.00
Total Other Objects	\$1,717.00	\$1,717.00		\$3,434.00
Total 2260 Instruction and Curriculum Development Services	\$826,495.28	\$826,495.28		\$1,652,990.56

LEA : 124157802 Tredyffrin-Easttown SD

Printed 11/27/2019 10:37:41 AM

General Fund (10)				
2270 Instructional Staff Professional Development Services	<u>Elementary</u>	<u>Secondary</u>	<u>Federal</u>	<u>Total</u>
100 <u>Personnel Services – Salaries</u>				
100 Personnel Services – Salaries	98,942.26	98,942.26		197,884.52
Total Personnel Services – Salaries	\$98,942.26	\$98,942.26		\$197,884.52
200 <u>Personnel Services – Employee Benefits</u>				
220 Social Security Contributions	5,442.94	5,442.94		10,885.88
230 PSERS Retirement Contributions	28,825.51	28,825.51		57,651.02
240 Tuition Reimbursement	95,345.71	95,345.71		190,691.42
Total Personnel Services – Employee Benefits	\$129,614.16	\$129,614.16		\$259,228.32
300 <u>Purchased Professional and Technical Services</u>				
310 Official / Administrative Services			34,667.00	34,667.00
322 Professional Educational Services – lus	3,750.00	3,750.00		7,500.00
Total Purchased Professional and Technical Services	\$3,750.00	\$3,750.00	\$34,667.00	\$42,167.00
500 <u>Other Purchased Services</u>				
550 Printing and Binding	4,387.41	4,387.41		8,774.82
580 Travel	7,367.94	7,367.94		14,735.88
Total Other Purchased Services	\$11,755.35	\$11,755.35		\$23,510.70
600 <u>Supplies</u>				
610 General Supplies	3,874.88	3,874.88		7,749.76
640 Books and Periodicals	722.54	722.54		1,445.08
Total Supplies	\$4,597.42	\$4,597.42		\$9,194.84
800 <u>Other Objects</u>				
810 Dues and Fees	7,132.00	7,132.00		14,264.00
Total Other Objects	\$7,132.00	\$7,132.00		\$14,264.00
Total 2270 Instructional Staff Professional Development Services	\$255,791.19	\$255,791.19	\$34,667.00	\$546,249.38

LEA : 124157802 Tredyffrin-Easttown SD

Printed 11/27/2019 10:37:41 AM

General Fund (10)

2290 Other Instructional Staff Services	<u>Elementary</u>	<u>Secondary</u>	<u>Federal</u>	<u>Total</u>
300 <u>Purchased Professional and Technical Services</u>				
340 Technical Services	750.00	750.00		1,500.00
Total Purchased Professional and Technical Services	\$750.00	\$750.00		\$1,500.00
600 <u>Supplies</u>				
610 General Supplies	499.00	499.00		998.00
Total Supplies	\$499.00	\$499.00		\$998.00
Total 2290 Other Instructional Staff Services	\$1,249.00	\$1,249.00		\$2,498.00

LEA : 124157802 Tredyffrin-Easttown SD

Printed 11/27/2019 10:37:41 AM

General Fund (10)

2300 Support Services – Administration	Elementary	Secondary	Federal	Total
100 Personnel Services – Salaries				
100 Personnel Services – Salaries	1,872,875.05	2,053,060.94		4,668,193.07
Total Personnel Services – Salaries	\$1,872,875.05	\$2,053,060.94		\$4,668,193.07
200 Personnel Services – Employee Benefits				
210 Group Insurance – Contracted Provider	147,499.26	301,722.11		522,074.08
220 Social Security Contributions	118,851.93	140,406.79		302,086.84
230 PSERS Retirement Contributions	569,783.77	635,146.44		1,434,872.82
250 Unemployment Compensation	112.76	112.76		225.52
260 Workers' Compensation	15,239.58	15,239.58		30,479.16
Total Personnel Services – Employee Benefits	\$851,487.30	\$1,092,627.68		\$2,289,738.42
300 Purchased Professional and Technical Services				
310 Official / Administrative Services		5,747.75		5,747.75
322 Professional Educational Services – Ius	2,231.25	2,231.25		4,462.50
330 Other Professional Services				534,305.35
340 Technical Services				60,690.30
350 Security / Safety Services				4,605.50
Total Purchased Professional and Technical Services	\$2,231.25	\$7,979.00		\$609,811.40
400 Purchased Property Services				
430 Repairs and Maintenance Services	3,938.87	7,872.83		12,075.70
440 Rentals	881.82	18,864.54		25,655.48
Total Purchased Property Services	\$4,820.69	\$26,737.37		\$37,731.18
500 Other Purchased Services				
520 Insurance – General				328,645.40
530 Communications	3,047.76	2,848.11		64,040.85
541 Advertising Related to Federal Grant Awards				22,461.46
550 Printing and Binding	4,230.06	3,936.06		10,666.26
580 Travel	236.76	33,993.91		34,971.17
Total Other Purchased Services	\$7,514.58	\$40,778.08		\$460,785.14
600 Supplies				
610 General Supplies	12,817.32	13,630.57		36,678.10
630 Food				3,730.00
640 Books and Periodicals	2,717.80	9,591.88		12,501.63
Total Supplies	\$15,535.12	\$23,222.45		\$52,909.73
700 Property				
752 Capital Equipment – Original and Additional	3,714.55	12,610.06		16,324.61
762 Capitalized Equipment - Replacement	6,919.92	34,371.91		44,174.88
Total Property	\$10,634.47	\$46,981.97		\$60,499.49
800 Other Objects				
810 Dues and Fees	516.89	516.89		16,006.78
Total Other Objects	\$516.89	\$516.89		\$16,006.78
Total 2300 Support Services – Administration	\$2,765,615.35	\$3,291,904.38		\$8,195,675.21

LEA : 124157802 Tredyffrin-Easttown SD

Printed 11/27/2019 10:37:41 AM

General Fund (10)

2310 Board Services

Elementary Secondary Federal Total

300 <u>Purchased Professional and Technical Services</u>				
350 Security / Safety Services				4,605.50
Total Purchased Professional and Technical Services				\$4,605.50
500 <u>Other Purchased Services</u>				
520 Insurance – General				199,811.40
541 Advertising Related to Federal Grant Awards				11,544.16
Total Other Purchased Services				\$211,355.56
600 <u>Supplies</u>				
630 Food				3,730.00
Total Supplies				\$3,730.00
800 <u>Other Objects</u>				
810 Dues and Fees				12,945.00
Total Other Objects				\$12,945.00
Total 2310 Board Services				\$232,636.06

LEA : 124157802 Tredyffrin-Easttown SD

Printed 11/27/2019 10:37:41 AM

General Fund (10)

2320 Board Treasurer Services	<u>Elementary</u>	<u>Secondary</u>	<u>Federal</u>	<u>Total</u>
500 <u>Other Purchased Services</u>				
520 Insurance – General				128,834.00
Total Other Purchased Services				\$128,834.00
Total 2320 Board Treasurer Services				\$128,834.00

LEA : 124157802 Tredyffrin-Easttown SD

Printed 11/27/2019 10:37:41 AM

General Fund (10)

2330 Tax Assessment and Collection Services	<u>Elementary</u>	<u>Secondary</u>	<u>Federal</u>	<u>Total</u>
100 <u>Personnel Services – Salaries</u>				
100 Personnel Services – Salaries				51,311.82
Total Personnel Services – Salaries				\$51,311.82
200 <u>Personnel Services – Employee Benefits</u>				
210 Group Insurance – Contracted Provider				17,234.58
220 Social Security Contributions				3,827.25
230 PSERS Retirement Contributions				17,055.17
Total Personnel Services – Employee Benefits				\$38,117.00
300 <u>Purchased Professional and Technical Services</u>				
340 Technical Services				60,690.30
Total Purchased Professional and Technical Services				\$60,690.30
500 <u>Other Purchased Services</u>				
530 Communications				6,500.00
550 Printing and Binding				2,500.14
Total Other Purchased Services				\$9,000.14
600 <u>Supplies</u>				
610 General Supplies				3,576.15
Total Supplies				\$3,576.15
Total 2330 Tax Assessment and Collection Services				\$162,695.41

LEA : 124157802 Tredyffrin-Easttown SD

Printed 11/27/2019 10:37:41 AM

General Fund (10)				
2340 Staff Relations and Negotiations Services	<u>Elementary</u>	<u>Secondary</u>	<u>Federal</u>	<u>Total</u>
300 <u>Purchased Professional and Technical Services</u>				
330 Other Professional Services				58,645.00
Total Purchased Professional and Technical Services				\$58,645.00
400 <u>Purchased Property Services</u>				
430 Repairs and Maintenance Services				264.00
Total Purchased Property Services				\$264.00
500 <u>Other Purchased Services</u>				
541 Advertising Related to Federal Grant Awards				10,917.30
580 Travel				740.50
Total Other Purchased Services				\$11,657.80
600 <u>Supplies</u>				
610 General Supplies				4,040.08
Total Supplies				\$4,040.08
800 <u>Other Objects</u>				
810 Dues and Fees				1,648.00
Total Other Objects				\$1,648.00
Total 2340 Staff Relations and Negotiations Services				\$76,254.88

LEA : 124157802 Tredyffrin-Easttown SD

Printed 11/27/2019 10:37:41 AM

General Fund (10)

2350 Legal and Accounting Services	<u>Elementary</u>	<u>Secondary</u>	<u>Federal</u>	<u>Total</u>
300 <u>Purchased Professional and Technical Services</u>				
330 Other Professional Services				467,951.00
Total Purchased Professional and Technical Services				\$467,951.00
Total 2350 Legal and Accounting Services				\$467,951.00

LEA : 124157802 Tredyffrin-Easttown SD

Printed 11/27/2019 10:37:41 AM

General Fund (10)

2360 Office of the Superintendent / Executive Director Services	<u>Elementary</u>	<u>Secondary</u>	<u>Federal</u>	<u>Total</u>
100 <u>Personnel Services – Salaries</u>				
100 Personnel Services – Salaries				564,105.80
Total Personnel Services – Salaries				\$564,105.80
200 <u>Personnel Services – Employee Benefits</u>				
210 Group Insurance – Contracted Provider				39,062.63
220 Social Security Contributions				29,725.07
230 PSERS Retirement Contributions				170,887.72
Total Personnel Services – Employee Benefits				\$239,675.42
400 <u>Purchased Property Services</u>				
440 Rentals				5,909.12
Total Purchased Property Services				\$5,909.12
500 <u>Other Purchased Services</u>				
530 Communications	25.00	25.00		50.00
Total Other Purchased Services	\$25.00	\$25.00		\$50.00
600 <u>Supplies</u>				
610 General Supplies				2,152.98
640 Books and Periodicals				58.00
Total Supplies				\$2,210.98
700 <u>Property</u>				
762 Capitalized Equipment - Replacement				2,883.05
Total Property				\$2,883.05
Total 2360 Office of the Superintendent / Executive Director Services	\$25.00	\$25.00		\$814,834.37

LEA : 124157802 Tredyffrin-Easttown SD

Printed 11/27/2019 10:37:41 AM

General Fund (10)				
2370 Community Relations Services				
	<u>Elementary</u>	<u>Secondary</u>	<u>Federal</u>	<u>Total</u>
100 <u>Personnel Services – Salaries</u>				
100 Personnel Services – Salaries				126,839.46
Total Personnel Services – Salaries				\$126,839.46
200 <u>Personnel Services – Employee Benefits</u>				
210 Group Insurance – Contracted Provider				16,555.50
220 Social Security Contributions				9,275.80
230 PSERS Retirement Contributions				41,999.72
Total Personnel Services – Employee Benefits				\$67,831.02
300 <u>Purchased Professional and Technical Services</u>				
330 Other Professional Services				7,709.35
Total Purchased Professional and Technical Services				\$7,709.35
500 <u>Other Purchased Services</u>				
530 Communications				51,644.98
Total Other Purchased Services				\$51,644.98
600 <u>Supplies</u>				
640 Books and Periodicals				133.95
Total Supplies				\$133.95
800 <u>Other Objects</u>				
810 Dues and Fees				380.00
Total Other Objects				\$380.00
Total 2370 Community Relations Services				\$254,538.76

LEA : 124157802 Tredyffrin-Easttown SD

Printed 11/27/2019 10:37:41 AM

General Fund (10)

2380 Office of the Principal Services	Elementary	Secondary	Federal	Total
100 <u>Personnel Services – Salaries</u>				
100 Personnel Services – Salaries	1,872,875.05	2,053,060.94		3,925,935.99
Total Personnel Services – Salaries	\$1,872,875.05	\$2,053,060.94		\$3,925,935.99
200 <u>Personnel Services – Employee Benefits</u>				
210 Group Insurance – Contracted Provider	147,499.26	301,722.11		449,221.37
220 Social Security Contributions	118,851.93	140,406.79		259,258.72
230 PSERS Retirement Contributions	569,783.77	635,146.44		1,204,930.21
250 Unemployment Compensation	112.76	112.76		225.52
260 Workers' Compensation	15,239.58	15,239.58		30,479.16
Total Personnel Services – Employee Benefits	\$851,487.30	\$1,092,627.68		\$1,944,114.98
300 <u>Purchased Professional and Technical Services</u>				
310 Official / Administrative Services		5,747.75		5,747.75
322 Professional Educational Services – lus	2,231.25	2,231.25		4,462.50
Total Purchased Professional and Technical Services	\$2,231.25	\$7,979.00		\$10,210.25
400 <u>Purchased Property Services</u>				
430 Repairs and Maintenance Services	3,938.87	7,872.83		11,811.70
440 Rentals	881.82	18,864.54		19,746.36
Total Purchased Property Services	\$4,820.69	\$26,737.37		\$31,558.06
500 <u>Other Purchased Services</u>				
530 Communications	3,022.76	2,823.11		5,845.87
550 Printing and Binding	4,230.06	3,936.06		8,166.12
580 Travel	236.76	33,993.91		34,230.67
Total Other Purchased Services	\$7,489.58	\$40,753.08		\$48,242.66
600 <u>Supplies</u>				
610 General Supplies	12,817.32	13,630.57		26,447.89
640 Books and Periodicals	2,717.80	9,591.88		12,309.68
Total Supplies	\$15,535.12	\$23,222.45		\$38,757.57
700 <u>Property</u>				
752 Capital Equipment – Original and Additional	3,714.55	12,610.06		16,324.61
762 Capitalized Equipment - Replacement	6,919.92	34,371.91		41,291.83
Total Property	\$10,634.47	\$46,981.97		\$57,616.44
800 <u>Other Objects</u>				
810 Dues and Fees	516.89	516.89		1,033.78
Total Other Objects	\$516.89	\$516.89		\$1,033.78
Total 2380 Office of the Principal Services	\$2,765,590.35	\$3,291,879.38		\$6,057,469.73

LEA : 124157802 Tredyffrin-Easttown SD

Printed 11/27/2019 10:37:41 AM

General Fund (10)

2390 Other Administration Services	<u>Elementary</u>	<u>Secondary</u>	<u>Federal</u>	<u>Total</u>
600 <u>Supplies</u>				
610 General Supplies				461.00
Total Supplies				\$461.00
Total 2390 Other Administration Services				\$461.00

LEA : 124157802 Tredyffrin-Easttown SD

Printed 11/27/2019 10:37:41 AM

General Fund (10)				
2400 Support Services – Pupil Health	<u>Elementary</u>	<u>Secondary</u>	<u>Federal</u>	<u>Total</u>
100 <u>Personnel Services – Salaries</u>				
100 Personnel Services – Salaries				636,020.67
Total Personnel Services – Salaries				\$636,020.67
200 <u>Personnel Services – Employee Benefits</u>				
210 Group Insurance – Contracted Provider				149,838.71
220 Social Security Contributions				46,887.75
230 PSERS Retirement Contributions				206,994.44
250 Unemployment Compensation				41.10
260 Workers' Compensation				4,139.54
Total Personnel Services – Employee Benefits				\$407,901.54
300 <u>Purchased Professional and Technical Services</u>				
322 Professional Educational Services – Ius				1,200.00
329 Professional Educational Services – Other				369,860.59
Total Purchased Professional and Technical Services				\$371,060.59
400 <u>Purchased Property Services</u>				
430 Repairs and Maintenance Services				490.00
Total Purchased Property Services				\$490.00
600 <u>Supplies</u>				
610 General Supplies				14,952.24
640 Books and Periodicals				10,628.24
Total Supplies				\$25,580.48
700 <u>Property</u>				
762 Capitalized Equipment - Replacement				10,059.82
Total Property				\$10,059.82
Total 2400 Support Services – Pupil Health				\$1,451,113.10

LEA : 124157802 Tredyffrin-Easttown SD

Printed 11/27/2019 10:37:41 AM

General Fund (10)

2410 Supervision of Health Services	<u>Elementary</u>	<u>Secondary</u>	<u>Federal</u>	<u>Total</u>
100 <u>Personnel Services – Salaries</u>				
100 Personnel Services – Salaries				636,020.67
Total Personnel Services – Salaries				\$636,020.67
200 <u>Personnel Services – Employee Benefits</u>				
210 Group Insurance – Contracted Provider				149,838.71
220 Social Security Contributions				46,887.75
230 PSERS Retirement Contributions				206,994.44
250 Unemployment Compensation				41.10
260 Workers' Compensation				4,139.54
Total Personnel Services – Employee Benefits				\$407,901.54
300 <u>Purchased Professional and Technical Services</u>				
329 Professional Educational Services – Other				68,102.72
Total Purchased Professional and Technical Services				\$68,102.72
Total 2410 Supervision of Health Services				\$1,112,024.93

LEA : 124157802 Tredyffrin-Easttown SD

Printed 11/27/2019 10:37:41 AM

General Fund (10)

2411 Supervision of Health Services – Head of Component	<u>Elementary</u>	<u>Secondary</u>	<u>Federal</u>	<u>Total</u>
100 <u>Personnel Services – Salaries</u>				
100 Personnel Services – Salaries				636,020.67
Total Personnel Services – Salaries				\$636,020.67
200 <u>Personnel Services – Employee Benefits</u>				
210 Group Insurance – Contracted Provider				149,838.71
220 Social Security Contributions				46,887.75
230 PSERS Retirement Contributions				206,994.44
250 Unemployment Compensation				41.10
260 Workers' Compensation				4,139.54
Total Personnel Services – Employee Benefits				\$407,901.54
300 <u>Purchased Professional and Technical Services</u>				
329 Professional Educational Services – Other				68,102.72
Total Purchased Professional and Technical Services				\$68,102.72
Total 2411 Supervision of Health Services – Head of Component				\$1,112,024.93

LEA : 124157802 Tredyffrin-Easttown SD

Printed 11/27/2019 10:37:41 AM

General Fund (10)

2420 Medical Services

<u>Elementary</u>	<u>Secondary</u>	<u>Federal</u>	<u>Total</u>
-------------------	------------------	----------------	--------------

300 Purchased Professional and Technical Services

329 Professional Educational Services – Other			301,649.87
---	--	--	------------

Total Purchased Professional and Technical Services			\$301,649.87
--	--	--	---------------------

Total 2420 Medical Services			\$301,649.87
------------------------------------	--	--	---------------------

LEA : 124157802 Tredyffrin-Easttown SD

Printed 11/27/2019 10:37:41 AM

General Fund (10)

2430 Dental Services

<u>Elementary</u>	<u>Secondary</u>	<u>Federal</u>	<u>Total</u>
-------------------	------------------	----------------	--------------

300 Purchased Professional and Technical Services

322 Professional Educational Services – lus			720.00
---	--	--	--------

Total Purchased Professional and Technical Services			\$720.00
--	--	--	-----------------

Total 2430 Dental Services			\$720.00
-----------------------------------	--	--	-----------------

LEA : 124157802 Tredyffrin-Easttown SD

Printed 11/27/2019 10:37:41 AM

General Fund (10)				
2440 Nursing Services	<u>Elementary</u>	<u>Secondary</u>	<u>Federal</u>	<u>Total</u>
300 <u>Purchased Professional and Technical Services</u>				
322 Professional Educational Services – Ius				480.00
329 Professional Educational Services – Other				108.00
Total Purchased Professional and Technical Services				\$588.00
400 <u>Purchased Property Services</u>				
430 Repairs and Maintenance Services				490.00
Total Purchased Property Services				\$490.00
600 <u>Supplies</u>				
610 General Supplies				14,952.24
640 Books and Periodicals				10,628.24
Total Supplies				\$25,580.48
700 <u>Property</u>				
762 Capitalized Equipment - Replacement				10,059.82
Total Property				\$10,059.82
Total 2440 Nursing Services				\$36,718.30

LEA : 124157802 Tredyffrin-Easttown SD

Printed 11/27/2019 10:37:41 AM

General Fund (10)				
2500 Support Services – Business	<u>Elementary</u>	<u>Secondary</u>	<u>Federal</u>	<u>Total</u>
100 <u>Personnel Services – Salaries</u>				
100 Personnel Services – Salaries				696,550.81
Total Personnel Services – Salaries				\$696,550.81
200 <u>Personnel Services – Employee Benefits</u>				
210 Group Insurance – Contracted Provider				221,000.14
220 Social Security Contributions				52,211.03
230 PSERS Retirement Contributions				230,886.59
250 Unemployment Compensation				49.68
260 Workers' Compensation				4,569.71
Total Personnel Services – Employee Benefits				\$508,717.15
300 <u>Purchased Professional and Technical Services</u>				
322 Professional Educational Services – lus				415.00
330 Other Professional Services				32,550.00
Total Purchased Professional and Technical Services				\$32,965.00
400 <u>Purchased Property Services</u>				
430 Repairs and Maintenance Services				15,038.59
Total Purchased Property Services				\$15,038.59
500 <u>Other Purchased Services</u>				
550 Printing and Binding				658.80
580 Travel				3,855.66
Total Other Purchased Services				\$4,514.46
600 <u>Supplies</u>				
610 General Supplies				2,929.23
640 Books and Periodicals				46,906.42
Total Supplies				\$49,835.65
700 <u>Property</u>				
752 Capital Equipment – Original and Additional				15,410.35
762 Capitalized Equipment - Replacement				372.24
Total Property				\$15,782.59
800 <u>Other Objects</u>				
810 Dues and Fees				24,123.02
Total Other Objects				\$24,123.02
Total 2500 Support Services – Business				\$1,347,527.27

LEA : 124157802 Tredyffrin-Easttown SD

Printed 11/27/2019 10:37:41 AM

General Fund (10)				
2510 Fiscal Services				
	<u>Elementary</u>	<u>Secondary</u>	<u>Federal</u>	<u>Total</u>
100 <u>Personnel Services – Salaries</u>				
100 Personnel Services – Salaries				544,380.06
Total Personnel Services – Salaries				\$544,380.06
200 <u>Personnel Services – Employee Benefits</u>				
210 Group Insurance – Contracted Provider				176,377.06
220 Social Security Contributions				40,847.86
230 PSERS Retirement Contributions				180,430.90
250 Unemployment Compensation				49.68
260 Workers' Compensation				4,569.71
Total Personnel Services – Employee Benefits				\$402,275.21
300 <u>Purchased Professional and Technical Services</u>				
322 Professional Educational Services – lus				415.00
330 Other Professional Services				32,550.00
Total Purchased Professional and Technical Services				\$32,965.00
400 <u>Purchased Property Services</u>				
430 Repairs and Maintenance Services				14,606.59
Total Purchased Property Services				\$14,606.59
500 <u>Other Purchased Services</u>				
550 Printing and Binding				658.80
580 Travel				2,607.27
Total Other Purchased Services				\$3,266.07
600 <u>Supplies</u>				
610 General Supplies				2,204.99
640 Books and Periodicals				46,906.42
Total Supplies				\$49,111.41
700 <u>Property</u>				
752 Capital Equipment – Original and Additional				15,410.35
762 Capitalized Equipment - Replacement				372.24
Total Property				\$15,782.59
800 <u>Other Objects</u>				
810 Dues and Fees				23,873.02
Total Other Objects				\$23,873.02
Total 2510 Fiscal Services				\$1,086,259.95

LEA : 124157802 Tredyffrin-Easttown SD

Printed 11/27/2019 10:37:41 AM

General Fund (10)				
2511 Supervision of Fiscal Services - Head of Component	<u>Elementary</u>	<u>Secondary</u>	<u>Federal</u>	<u>Total</u>
100 <u>Personnel Services – Salaries</u>				
100 Personnel Services – Salaries				544,380.06
Total Personnel Services – Salaries				\$544,380.06
200 <u>Personnel Services – Employee Benefits</u>				
210 Group Insurance – Contracted Provider				176,377.06
220 Social Security Contributions				40,847.86
230 PSERS Retirement Contributions				180,430.90
250 Unemployment Compensation				49.68
260 Workers' Compensation				4,569.71
Total Personnel Services – Employee Benefits				\$402,275.21
300 <u>Purchased Professional and Technical Services</u>				
322 Professional Educational Services – lus				415.00
330 Other Professional Services				32,550.00
Total Purchased Professional and Technical Services				\$32,965.00
400 <u>Purchased Property Services</u>				
430 Repairs and Maintenance Services				14,606.59
Total Purchased Property Services				\$14,606.59
500 <u>Other Purchased Services</u>				
550 Printing and Binding				658.80
580 Travel				2,607.27
Total Other Purchased Services				\$3,266.07
600 <u>Supplies</u>				
610 General Supplies				2,204.99
640 Books and Periodicals				46,906.42
Total Supplies				\$49,111.41
700 <u>Property</u>				
752 Capital Equipment – Original and Additional				15,410.35
762 Capitalized Equipment - Replacement				372.24
Total Property				\$15,782.59
800 <u>Other Objects</u>				
810 Dues and Fees				23,873.02
Total Other Objects				\$23,873.02
Total 2511 Supervision of Fiscal Services - Head of Component				\$1,086,259.95

LEA : 124157802 Tredyffrin-Easttown SD

Printed 11/27/2019 10:37:41 AM

General Fund (10)				
2520 Purchasing Services	<u>Elementary</u>	<u>Secondary</u>	<u>Federal</u>	<u>Total</u>
100 <u>Personnel Services – Salaries</u>				
100 Personnel Services – Salaries				152,170.75
Total Personnel Services – Salaries				\$152,170.75
200 <u>Personnel Services – Employee Benefits</u>				
210 Group Insurance – Contracted Provider				44,623.08
220 Social Security Contributions				11,363.17
230 PSERS Retirement Contributions				50,455.69
Total Personnel Services – Employee Benefits				\$106,441.94
400 <u>Purchased Property Services</u>				
430 Repairs and Maintenance Services				432.00
Total Purchased Property Services				\$432.00
500 <u>Other Purchased Services</u>				
580 Travel				1,248.39
Total Other Purchased Services				\$1,248.39
600 <u>Supplies</u>				
610 General Supplies				724.24
Total Supplies				\$724.24
800 <u>Other Objects</u>				
810 Dues and Fees				250.00
Total Other Objects				\$250.00
Total 2520 Purchasing Services				\$261,267.32

LEA : 124157802 Tredyffrin-Easttown SD

Printed 11/27/2019 10:37:41 AM

General Fund (10)				
2600 Operation and Maintenance of Plant Services	<u>Elementary</u>	<u>Secondary</u>	<u>Federal</u>	<u>Total</u>
100 <u>Personnel Services – Salaries</u>				
100 Personnel Services – Salaries				4,334,218.85
Total Personnel Services – Salaries				\$4,334,218.85
200 <u>Personnel Services – Employee Benefits</u>				
210 Group Insurance – Contracted Provider				983,769.87
220 Social Security Contributions				326,042.07
230 PSERS Retirement Contributions				1,398,373.27
250 Unemployment Compensation				279.14
260 Workers' Compensation				29,024.19
291 Other Retirement Plans				21,723.48
Total Personnel Services – Employee Benefits				\$2,759,212.02
300 <u>Purchased Professional and Technical Services</u>				
310 Official / Administrative Services				161,235.79
Total Purchased Professional and Technical Services				\$161,235.79
400 <u>Purchased Property Services</u>				
410 Cleaning Services				89,804.77
420 Utility Services				1,073,472.95
430 Repairs and Maintenance Services				1,339,334.27
440 Rentals				34,876.48
Total Purchased Property Services				\$2,537,488.47
500 <u>Other Purchased Services</u>				
522 Automotive Liability Insurance				69,529.00
523 General Property and Liability Insurance				61,197.25
530 Communications				150,147.29
580 Travel				121.33
Total Other Purchased Services				\$280,994.87
600 <u>Supplies</u>				
610 General Supplies	359,683.88	359,683.87		719,367.75
620 Energy				489,785.24
640 Books and Periodicals				12,486.08
Total Supplies	\$359,683.88	\$359,683.87		\$1,221,639.07
700 <u>Property</u>				
752 Capital Equipment – Original and Additional				48,358.75
762 Capitalized Equipment - Replacement				27,399.49
768 Capitalized Technology Software - Replacement				914.00
Total Property				\$76,672.24
800 <u>Other Objects</u>				
810 Dues and Fees				7,668.89
Total Other Objects				\$7,668.89
Total 2600 Operation and Maintenance of Plant Services	\$359,683.88	\$359,683.87		\$11,379,130.20

LEA : 124157802 Tredyffrin-Easttown SD

Printed 11/27/2019 10:37:41 AM

General Fund (10)				
2610 Supervision of Operation and Maintenance of Plant Services	<u>Elementary</u>	<u>Secondary</u>	<u>Federal</u>	<u>Total</u>
100 <u>Personnel Services – Salaries</u>				
100 Personnel Services – Salaries				4,334,218.85
Total Personnel Services – Salaries				\$4,334,218.85
200 <u>Personnel Services – Employee Benefits</u>				
210 Group Insurance – Contracted Provider				983,769.87
220 Social Security Contributions				326,042.07
230 PSERS Retirement Contributions				1,398,373.27
250 Unemployment Compensation				279.14
260 Workers' Compensation				29,024.19
291 Other Retirement Plans				21,723.48
Total Personnel Services – Employee Benefits				\$2,759,212.02
300 <u>Purchased Professional and Technical Services</u>				
310 Official / Administrative Services				161,235.79
Total Purchased Professional and Technical Services				\$161,235.79
400 <u>Purchased Property Services</u>				
410 Cleaning Services				89,804.77
420 Utility Services				1,073,472.95
430 Repairs and Maintenance Services				1,339,334.27
440 Rentals				34,876.48
Total Purchased Property Services				\$2,537,488.47
500 <u>Other Purchased Services</u>				
522 Automotive Liability Insurance				69,529.00
523 General Property and Liability Insurance				61,197.25
530 Communications				150,147.29
580 Travel				121.33
Total Other Purchased Services				\$280,994.87
600 <u>Supplies</u>				
610 General Supplies	359,683.88	359,683.87		719,367.75
620 Energy				489,785.24
640 Books and Periodicals				12,486.08
Total Supplies	\$359,683.88	\$359,683.87		\$1,221,639.07
700 <u>Property</u>				
752 Capital Equipment – Original and Additional				48,358.75
762 Capitalized Equipment - Replacement				27,399.49
768 Capitalized Technology Software - Replacement				914.00
Total Property				\$76,672.24
800 <u>Other Objects</u>				
810 Dues and Fees				7,668.89
Total Other Objects				\$7,668.89
Total 2610 Supervision of Operation and Maintenance of Plant Services	\$359,683.88	\$359,683.87		\$11,379,130.20

LEA : 124157802 Tredyffrin-Easttown SD

Printed 11/27/2019 10:37:41 AM

General Fund (10)

2611 Supervision of Operation and Maintenance of Plant Services – Head of Component	Elementary	Secondary	Federal	Total
100 <u>Personnel Services – Salaries</u>				
100 Personnel Services – Salaries				4,334,218.85
Total Personnel Services – Salaries				\$4,334,218.85
200 <u>Personnel Services – Employee Benefits</u>				
210 Group Insurance – Contracted Provider				983,769.87
220 Social Security Contributions				326,042.07
230 PSERS Retirement Contributions				1,398,373.27
250 Unemployment Compensation				279.14
260 Workers' Compensation				29,024.19
291 Other Retirement Plans				21,723.48
Total Personnel Services – Employee Benefits				\$2,759,212.02
300 <u>Purchased Professional and Technical Services</u>				
310 Official / Administrative Services				161,235.79
Total Purchased Professional and Technical Services				\$161,235.79
400 <u>Purchased Property Services</u>				
410 Cleaning Services				89,804.77
420 Utility Services				1,073,472.95
430 Repairs and Maintenance Services				1,339,334.27
440 Rentals				34,876.48
Total Purchased Property Services				\$2,537,488.47
500 <u>Other Purchased Services</u>				
522 Automotive Liability Insurance				69,529.00
523 General Property and Liability Insurance				61,197.25
530 Communications				150,147.29
580 Travel				121.33
Total Other Purchased Services				\$280,994.87
600 <u>Supplies</u>				
610 General Supplies	359,683.88	359,683.87		719,367.75
620 Energy				489,785.24
640 Books and Periodicals				12,486.08
Total Supplies	\$359,683.88	\$359,683.87		\$1,221,639.07
700 <u>Property</u>				
752 Capital Equipment – Original and Additional				48,358.75
762 Capitalized Equipment - Replacement				27,399.49
768 Capitalized Technology Software - Replacement				914.00
Total Property				\$76,672.24
800 <u>Other Objects</u>				
810 Dues and Fees				7,668.89
Total Other Objects				\$7,668.89
Total 2611 Supervision of Operation and Maintenance of Plant Services – Head of Component	\$359,683.88	\$359,683.87		\$11,379,130.20

LEA : 124157802 Tredyffrin-Easttown SD

Printed 11/27/2019 10:37:41 AM

General Fund (10)				
2700 Student Transportation Services	<u>Elementary</u>	<u>Secondary</u>	<u>Federal</u>	<u>Total</u>
100 <u>Personnel Services – Salaries</u>				
100 Personnel Services – Salaries				257,529.47
Total Personnel Services – Salaries				\$257,529.47
200 <u>Personnel Services – Employee Benefits</u>				
210 Group Insurance – Contracted Provider				35,984.09
220 Social Security Contributions				19,514.85
230 PSERS Retirement Contributions				83,518.33
250 Unemployment Compensation				52.18
260 Workers' Compensation				1,705.11
Total Personnel Services – Employee Benefits				\$140,774.56
300 <u>Purchased Professional and Technical Services</u>				
329 Professional Educational Services – Other				3,147.07
Total Purchased Professional and Technical Services				\$3,147.07
400 <u>Purchased Property Services</u>				
430 Repairs and Maintenance Services				500.00
440 Rentals				10,306.08
Total Purchased Property Services				\$10,806.08
500 <u>Other Purchased Services</u>				
513 Contracted Carriers				6,365,966.64
516 Student Transportation Services From the IU				8,569.87
580 Travel				1,098.01
Total Other Purchased Services				\$6,375,634.52
600 <u>Supplies</u>				
610 General Supplies				43,280.05
620 Energy				426,306.65
Total Supplies				\$469,586.70
700 <u>Property</u>				
752 Capital Equipment – Original and Additional				9,570.30
758 Capitalized Technology Software - Original				630.00
Total Property				\$10,200.30
Total 2700 Student Transportation Services				\$7,267,678.70

LEA : 124157802 Tredyffrin-Easttown SD

Printed 11/27/2019 10:37:41 AM

General Fund (10)				
2710 Supervision of Student Transportation Services	<u>Elementary</u>	<u>Secondary</u>	<u>Federal</u>	<u>Total</u>
100 <u>Personnel Services – Salaries</u>				
100 Personnel Services – Salaries				257,529.47
Total Personnel Services – Salaries				\$257,529.47
200 <u>Personnel Services – Employee Benefits</u>				
210 Group Insurance – Contracted Provider				35,984.09
220 Social Security Contributions				19,514.85
230 PSERS Retirement Contributions				83,518.33
250 Unemployment Compensation				52.18
260 Workers' Compensation				1,705.11
Total Personnel Services – Employee Benefits				\$140,774.56
300 <u>Purchased Professional and Technical Services</u>				
329 Professional Educational Services – Other				3,147.07
Total Purchased Professional and Technical Services				\$3,147.07
400 <u>Purchased Property Services</u>				
430 Repairs and Maintenance Services				500.00
440 Rentals				10,306.08
Total Purchased Property Services				\$10,806.08
500 <u>Other Purchased Services</u>				
513 Contracted Carriers				4,588,897.31
516 Student Transportation Services From the IU				8,569.87
580 Travel				1,098.01
Total Other Purchased Services				\$4,598,565.19
600 <u>Supplies</u>				
610 General Supplies				43,280.05
620 Energy				426,306.65
Total Supplies				\$469,586.70
700 <u>Property</u>				
752 Capital Equipment – Original and Additional				9,570.30
758 Capitalized Technology Software - Original				630.00
Total Property				\$10,200.30
Total 2710 Supervision of Student Transportation Services				\$5,490,609.37

LEA : 124157802 Tredyffrin-Easttown SD

Printed 11/27/2019 10:37:41 AM

General Fund (10)				
2711 Supervision of Student Transportation Services – Head of Component	<u>Elementary</u>	<u>Secondary</u>	<u>Federal</u>	<u>Total</u>
100 <u>Personnel Services – Salaries</u>				
100 Personnel Services – Salaries				257,529.47
Total Personnel Services – Salaries				\$257,529.47
200 <u>Personnel Services – Employee Benefits</u>				
210 Group Insurance – Contracted Provider				35,984.09
220 Social Security Contributions				19,514.85
230 PSERS Retirement Contributions				83,518.33
250 Unemployment Compensation				52.18
260 Workers' Compensation				1,705.11
Total Personnel Services – Employee Benefits				\$140,774.56
300 <u>Purchased Professional and Technical Services</u>				
329 Professional Educational Services – Other				3,147.07
Total Purchased Professional and Technical Services				\$3,147.07
400 <u>Purchased Property Services</u>				
430 Repairs and Maintenance Services				500.00
440 Rentals				10,306.08
Total Purchased Property Services				\$10,806.08
500 <u>Other Purchased Services</u>				
513 Contracted Carriers				4,588,897.31
516 Student Transportation Services From the IU				8,569.87
580 Travel				1,098.01
Total Other Purchased Services				\$4,598,565.19
600 <u>Supplies</u>				
610 General Supplies				43,280.05
620 Energy				426,306.65
Total Supplies				\$469,586.70
700 <u>Property</u>				
752 Capital Equipment – Original and Additional				9,570.30
758 Capitalized Technology Software - Original				630.00
Total Property				\$10,200.30
Total 2711 Supervision of Student Transportation Services – Head of Component				\$5,490,609.37

LEA : 124157802 Tredyffrin-Easttown SD

Printed 11/27/2019 10:37:41 AM

General Fund (10)

2750 Nonpublic Transportation	<u>Elementary</u>	<u>Secondary</u>	<u>Federal</u>	<u>Total</u>
500 <u>Other Purchased Services</u>				
513 Contracted Carriers				1,777,069.33
Total Other Purchased Services				\$1,777,069.33
Total 2750 Nonpublic Transportation				\$1,777,069.33

LEA : 124157802 Tredyffrin-Easttown SD

Printed 11/27/2019 10:37:41 AM

General Fund (10)					
2800 Support Services – Central		Elementary	Secondary	Federal	Total
100 <u>Personnel Services – Salaries</u>					
100 Personnel Services – Salaries					1,385,400.53
Total Personnel Services – Salaries					\$1,385,400.53
200 <u>Personnel Services – Employee Benefits</u>					
210 Group Insurance – Contracted Provider					238,222.76
220 Social Security Contributions					98,840.20
230 PSERS Retirement Contributions					442,897.55
250 Unemployment Compensation					52.54
260 Workers' Compensation					9,017.31
Total Personnel Services – Employee Benefits					\$789,030.36
300 <u>Purchased Professional and Technical Services</u>					
310 Official / Administrative Services					191,823.82
330 Other Professional Services					856.00
340 Technical Services					255,235.57
Total Purchased Professional and Technical Services					\$447,915.39
400 <u>Purchased Property Services</u>					
430 Repairs and Maintenance Services					86,926.87
440 Rentals					130,612.59
Total Purchased Property Services					\$217,539.46
500 <u>Other Purchased Services</u>					
530 Communications					30,000.00
580 Travel					3,190.67
Total Other Purchased Services					\$33,190.67
600 <u>Supplies</u>					
610 General Supplies					53,748.78
640 Books and Periodicals					369,627.70
Total Supplies					\$423,376.48
700 <u>Property</u>					
758 Capitalized Technology Software - Original					300,733.57
Total Property					\$300,733.57
800 <u>Other Objects</u>					
810 Dues and Fees					250.00
Total Other Objects					\$250.00
Total 2800 Support Services – Central					\$3,597,436.46

LEA : 124157802 Tredyffrin-Easttown SD

Printed 11/27/2019 10:37:41 AM

General Fund (10)				
2810 Planning, Research, Development and Evaluation Services	<u>Elementary</u>	<u>Secondary</u>	<u>Federal</u>	<u>Total</u>
300 <u>Purchased Professional and Technical Services</u>				
310 Official / Administrative Services				51,544.50
Total Purchased Professional and Technical Services				\$51,544.50
600 <u>Supplies</u>				
610 General Supplies				1,789.03
640 Books and Periodicals				857.46
Total Supplies				\$2,646.49
Total 2810 Planning, Research, Development and Evaluation Services				\$54,190.99

LEA : 124157802 Tredyffrin-Easttown SD

Printed 11/27/2019 10:37:41 AM

General Fund (10)

2830 Staff Services

Elementary Secondary Federal Total

100 <u>Personnel Services – Salaries</u>				
100 Personnel Services – Salaries				423,757.61
Total Personnel Services – Salaries				\$423,757.61
200 <u>Personnel Services – Employee Benefits</u>				
210 Group Insurance – Contracted Provider				45,337.66
220 Social Security Contributions				27,119.21
230 PSERS Retirement Contributions				132,488.41
Total Personnel Services – Employee Benefits				\$204,945.28
300 <u>Purchased Professional and Technical Services</u>				
330 Other Professional Services				856.00
Total Purchased Professional and Technical Services				\$856.00
Total 2830 Staff Services				\$629,558.89

LEA : 124157802 Tredyffrin-Easttown SD

Printed 11/27/2019 10:37:41 AM

General Fund (10)

2831 Supervision of Staff Services

Elementary Secondary Federal Total

100 <u>Personnel Services – Salaries</u>				
100 Personnel Services – Salaries				423,757.61
Total Personnel Services – Salaries				\$423,757.61
200 <u>Personnel Services – Employee Benefits</u>				
210 Group Insurance – Contracted Provider				45,337.66
220 Social Security Contributions				27,119.21
230 PSERS Retirement Contributions				132,488.41
Total Personnel Services – Employee Benefits				\$204,945.28
300 <u>Purchased Professional and Technical Services</u>				
330 Other Professional Services				856.00
Total Purchased Professional and Technical Services				\$856.00
Total 2831 Supervision of Staff Services				\$629,558.89

LEA : 124157802 Tredyffrin-Easttown SD

Printed 11/27/2019 10:37:41 AM

General Fund (10)

2840 Data Processing Services	<u>Elementary</u>	<u>Secondary</u>	<u>Federal</u>	<u>Total</u>
100 <u>Personnel Services – Salaries</u>				
100 Personnel Services – Salaries				936,403.30
Total Personnel Services – Salaries				\$936,403.30
200 <u>Personnel Services – Employee Benefits</u>				
210 Group Insurance – Contracted Provider				189,412.02
220 Social Security Contributions				69,803.80
230 PSERS Retirement Contributions				304,814.56
250 Unemployment Compensation				52.54
260 Workers' Compensation				9,017.31
Total Personnel Services – Employee Benefits				\$573,100.23
300 <u>Purchased Professional and Technical Services</u>				
310 Official / Administrative Services				27,340.00
340 Technical Services				255,235.57
Total Purchased Professional and Technical Services				\$282,575.57
400 <u>Purchased Property Services</u>				
430 Repairs and Maintenance Services				86,926.87
440 Rentals				1,384.39
Total Purchased Property Services				\$88,311.26
500 <u>Other Purchased Services</u>				
580 Travel				3,190.67
Total Other Purchased Services				\$3,190.67
600 <u>Supplies</u>				
610 General Supplies				44,441.77
640 Books and Periodicals				365,097.83
Total Supplies				\$409,539.60
700 <u>Property</u>				
758 Capitalized Technology Software - Original				300,733.57
Total Property				\$300,733.57
800 <u>Other Objects</u>				
810 Dues and Fees				250.00
Total Other Objects				\$250.00
Total 2840 Data Processing Services				\$2,594,104.20

LEA : 124157802 Tredyffrin-Easttown SD

Printed 11/27/2019 10:37:41 AM

General Fund (10)

2890 Other Support Services Central	<u>Elementary</u>	<u>Secondary</u>	<u>Federal</u>	<u>Total</u>
100 <u>Personnel Services – Salaries</u>				
100 Personnel Services – Salaries				25,239.62
Total Personnel Services – Salaries				\$25,239.62
200 <u>Personnel Services – Employee Benefits</u>				
210 Group Insurance – Contracted Provider				3,473.08
220 Social Security Contributions				1,917.19
230 PSERS Retirement Contributions				5,594.58
Total Personnel Services – Employee Benefits				\$10,984.85
300 <u>Purchased Professional and Technical Services</u>				
310 Official / Administrative Services				112,939.32
Total Purchased Professional and Technical Services				\$112,939.32
400 <u>Purchased Property Services</u>				
440 Rentals				129,228.20
Total Purchased Property Services				\$129,228.20
500 <u>Other Purchased Services</u>				
530 Communications				30,000.00
Total Other Purchased Services				\$30,000.00
600 <u>Supplies</u>				
610 General Supplies				7,517.98
640 Books and Periodicals				3,672.41
Total Supplies				\$11,190.39
Total 2890 Other Support Services Central				\$319,582.38

LEA : 124157802 Tredyffrin-Easttown SD

Printed 11/27/2019 10:37:41 AM

General Fund (10)

2900 Other Support Services	<u>Elementary</u>	<u>Secondary</u>	<u>Federal</u>	<u>Total</u>
100 <u>Personnel Services – Salaries</u>				
100 Personnel Services – Salaries				156,447.11
Total Personnel Services – Salaries				\$156,447.11
200 <u>Personnel Services – Employee Benefits</u>				
210 Group Insurance – Contracted Provider				321,720.73
220 Social Security Contributions				11,869.58
230 PSERS Retirement Contributions				336.84
250 Unemployment Compensation				15.73
260 Workers' Compensation				999.99
Total Personnel Services – Employee Benefits				\$334,942.87
300 <u>Purchased Professional and Technical Services</u>				
330 Other Professional Services				22,864.03
Total Purchased Professional and Technical Services				\$22,864.03
500 <u>Other Purchased Services</u>				
595 IU Payments By Withholding				70,564.88
Total Other Purchased Services				\$70,564.88
Total 2900 Other Support Services				\$584,818.89

LEA : 124157802 Tredyffrin-Easttown SD

Printed 11/27/2019 10:37:41 AM

General Fund (10)

2910 Support Services Not Listed Elsewhere In the 2000 Series

Elementary Secondary Federal Total

100 <u>Personnel Services – Salaries</u>				
100 Personnel Services – Salaries				156,447.11
Total Personnel Services – Salaries				\$156,447.11
200 <u>Personnel Services – Employee Benefits</u>				
210 Group Insurance – Contracted Provider				321,720.73
220 Social Security Contributions				11,869.58
230 PSERS Retirement Contributions				336.84
250 Unemployment Compensation				15.73
260 Workers' Compensation				999.99
Total Personnel Services – Employee Benefits				\$334,942.87
300 <u>Purchased Professional and Technical Services</u>				
330 Other Professional Services				22,864.03
Total Purchased Professional and Technical Services				\$22,864.03
500 <u>Other Purchased Services</u>				
595 IU Payments By Withholding				70,564.88
Total Other Purchased Services				\$70,564.88
Total 2910 Support Services Not Listed Elsewhere In the 2000 Series				\$584,818.89

LEA : 124157802 Tredyffrin-Easttown SD

Printed 11/27/2019 10:37:45 AM

General Fund (10)

3000 Operation of Non-Instructional Services		<u>Total</u>
100 <u>Personnel Services – Salaries</u>		
100 Personnel Services – Salaries		977,002.51
Total Personnel Services – Salaries		\$977,002.51
200 <u>Personnel Services – Employee Benefits</u>		
210 Group Insurance – Contracted Provider		3,102.42
220 Social Security Contributions		73,177.51
230 PSERS Retirement Contributions		311,049.61
250 Unemployment Compensation		68.26
260 Workers' Compensation		1,989.50
Total Personnel Services – Employee Benefits		\$389,387.30
300 <u>Purchased Professional and Technical Services</u>		
310 Official / Administrative Services		5,906.00
322 Professional Educational Services – Ius		13,555.00
340 Technical Services		177,941.06
Total Purchased Professional and Technical Services		\$197,402.06
400 <u>Purchased Property Services</u>		
430 Repairs and Maintenance Services		24,574.63
440 Rentals		52,741.09
Total Purchased Property Services		\$77,315.72
500 <u>Other Purchased Services</u>		
510 Student Transportation Services		134,265.78
520 Insurance – General		31,360.00
580 Travel		2,680.38
Total Other Purchased Services		\$168,306.16
600 <u>Supplies</u>		
610 General Supplies		156,222.90
Total Supplies		\$156,222.90
700 <u>Property</u>		
762 Capitalized Equipment - Replacement		31,500.00
Total Property		\$31,500.00
800 <u>Other Objects</u>		
810 Dues and Fees		29,055.08
Total Other Objects		\$29,055.08
Total 3000 Operation of Non-Instructional Services		\$2,026,191.73

LEA : 124157802 Tredyffrin-Easttown SD

Printed 11/27/2019 10:37:45 AM

General Fund (10)				
3200 Student Activities				
	<u>Elementary</u>	<u>Secondary</u>	<u>Federal</u>	<u>Total</u>
100 <u>Personnel Services – Salaries</u>				
100 Personnel Services – Salaries				977,002.51
Total Personnel Services – Salaries				\$977,002.51
200 <u>Personnel Services – Employee Benefits</u>				
210 Group Insurance – Contracted Provider				3,102.42
220 Social Security Contributions				73,177.51
230 PSERS Retirement Contributions				311,049.61
250 Unemployment Compensation				68.26
260 Workers' Compensation				1,989.50
Total Personnel Services – Employee Benefits				\$389,387.30
300 <u>Purchased Professional and Technical Services</u>				
310 Official / Administrative Services				5,906.00
322 Professional Educational Services – Ius				13,555.00
340 Technical Services				177,941.06
Total Purchased Professional and Technical Services				\$197,402.06
400 <u>Purchased Property Services</u>				
430 Repairs and Maintenance Services				24,574.63
440 Rentals				52,741.09
Total Purchased Property Services				\$77,315.72
500 <u>Other Purchased Services</u>				
510 Student Transportation Services				134,265.78
520 Insurance – General				31,360.00
580 Travel				2,680.38
Total Other Purchased Services				\$168,306.16
600 <u>Supplies</u>				
610 General Supplies				156,222.90
Total Supplies				\$156,222.90
700 <u>Property</u>				
762 Capitalized Equipment - Replacement				31,500.00
Total Property				\$31,500.00
800 <u>Other Objects</u>				
810 Dues and Fees				29,055.08
Total Other Objects				\$29,055.08
Total 3200 Student Activities				\$2,026,191.73

LEA : 124157802 Tredyffrin-Easttown SD

Printed 11/27/2019 10:37:55 AM

General Fund (10)

5000 Other Expenditures and Financing Uses		<u>Total</u>
800 <u>Other Objects</u>		
880 Refunds of Prior Years' Receipts	12,908.54	
Total Other Objects		\$12,908.54
900 <u>Other Uses of Funds</u>		
932 Capital Reserve Fund Transfers Applicable To Fund 32	4,000,000.00	
939 Other Fund Transfers	6,863,954.00	
Total Other Uses of Funds		\$10,863,954.00
Total 5000 Other Expenditures and Financing Uses		\$10,876,862.54

LEA : 124157802 Tredyffrin-Easttown SD

Printed 11/27/2019 10:37:55 AM

General Fund (10)

5100 Debt Service / Other Expenditures and Financing Uses	<u>Elementary</u>	<u>Secondary</u>	<u>Federal</u>	<u>Total</u>
800 <u>Other Objects</u>				
880 Refunds of Prior Years' Receipts				12,908.54
Total Other Objects				\$12,908.54
Total 5100 Debt Service / Other Expenditures and Financing Uses				\$12,908.54

LEA : 124157802 Tredyffrin-Easttown SD

Printed 11/27/2019 10:37:55 AM

General Fund (10)

5130 Refund of Prior Year Revenues / Receipts	<u>Elementary</u>	<u>Secondary</u>	<u>Federal</u>	<u>Total</u>
800 <u>Other Objects</u>				
880 Refunds of Prior Years' Receipts				12,908.54
Total Other Objects				\$12,908.54
Total 5130 Refund of Prior Year Revenues / Receipts				\$12,908.54

LEA : 124157802 Tredyffrin-Easttown SD

Printed 11/27/2019 10:37:55 AM

General Fund (10)

5200 Interfund Transfers – Out

Elementary

Secondary

Federal

Total

900 Other Uses of Funds

932 Capital Reserve Fund Transfers Applicable To Fund 32

4,000,000.00

939 Other Fund Transfers

6,863,954.00

Total Other Uses of Funds				\$10,863,954.00
Total 5200 Interfund Transfers – Out				\$10,863,954.00

LEA : 124157802 Tredyffrin-Easttown SD

Printed 11/27/2019 10:37:55 AM

General Fund (10)

5230 Capital Projects Fund Transfers	<u>Elementary</u>	<u>Secondary</u>	<u>Federal</u>	<u>Total</u>
900 <u>Other Uses of Funds</u>				
932 Capital Reserve Fund Transfers Applicable To Fund 32				4,000,000.00
Total Other Uses of Funds				\$4,000,000.00
Total 5230 Capital Projects Fund Transfers				\$4,000,000.00

LEA : 124157802 Tredyffrin-Easttown SD

Printed 11/27/2019 10:37:55 AM

General Fund (10)

5240 Debt Service Fund Transfers	<u>Elementary</u>	<u>Secondary</u>	<u>Federal</u>	<u>Total</u>
900 <u>Other Uses of Funds</u>				
939 Other Fund Transfers				6,863,954.00
Total Other Uses of Funds				\$6,863,954.00
Total 5240 Debt Service Fund Transfers				\$6,863,954.00

LEA : 124157802 Tredyffrin-Easttown SD

Printed 11/27/2019 10:37:49 AM

Capital Reserve Fund - § 1431 (32)

4000 Facilities Acquisition, Construction and Improvement Services

Total

400 Purchased Property Services

450 Construction Services	2,785.58
---------------------------	----------

Total Purchased Property Services	\$2,785.58
--	-------------------

700 Property

790 Other Property	360.00
--------------------	--------

Total Property	\$360.00
-----------------------	-----------------

Total 4000 Facilities Acquisition, Construction and Improvement Services	\$3,145.58
---	-------------------

LEA : 124157802 Tredyffrin-Easttown SD

Printed 11/27/2019 10:37:49 AM

Capital Reserve Fund - § 1431 (32)

4600 Existing Building Improvement Services

<u>Elementary</u>	<u>Secondary</u>	<u>Federal</u>	<u>Total</u>
-------------------	------------------	----------------	--------------

400 Purchased Property Services

450 Construction Services			2,785.58
---------------------------	--	--	----------

Total Purchased Property Services			\$2,785.58
--	--	--	-------------------

700 Property

790 Other Property			360.00
--------------------	--	--	--------

Total Property			\$360.00
-----------------------	--	--	-----------------

Total 4600 Existing Building Improvement Services			\$3,145.58
--	--	--	-------------------

LEA : 124157802 Tredyffrin-Easttown SD

Printed 11/27/2019 10:37:51 AM

Other Capital Projects Fund (39)

4000 Facilities Acquisition, Construction and Improvement Services

Total

100	<u>Personnel Services – Salaries</u>	
100	Personnel Services – Salaries	13,918.34
Total Personnel Services – Salaries		\$13,918.34
300	<u>Purchased Professional and Technical Services</u>	
390	Other Purchased Professional and Technical Services	1,196,764.54
Total Purchased Professional and Technical Services		\$1,196,764.54
400	<u>Purchased Property Services</u>	
450	Construction Services	4,422,590.70
Total Purchased Property Services		\$4,422,590.70
600	<u>Supplies</u>	
610	General Supplies	195,600.00
Total Supplies		\$195,600.00
700	<u>Property</u>	
790	Other Property	93,949.47
Total Property		\$93,949.47
Total 4000 Facilities Acquisition, Construction and Improvement Services		\$5,922,823.05

LEA : 124157802 Tredyffrin-Easttown SD

Printed 11/27/2019 10:37:51 AM

Other Capital Projects Fund (39)

4600 Existing Building Improvement Services	<u>Elementary</u>	<u>Secondary</u>	<u>Federal</u>	<u>Total</u>
100 <u>Personnel Services – Salaries</u>				
100 Personnel Services – Salaries				13,918.34
Total Personnel Services – Salaries				\$13,918.34
300 <u>Purchased Professional and Technical Services</u>				
390 Other Purchased Professional and Technical Services				1,196,764.54
Total Purchased Professional and Technical Services				\$1,196,764.54
400 <u>Purchased Property Services</u>				
450 Construction Services				4,422,590.70
Total Purchased Property Services				\$4,422,590.70
600 <u>Supplies</u>				
610 General Supplies				195,600.00
Total Supplies				\$195,600.00
700 <u>Property</u>				
790 Other Property				93,949.47
Total Property				\$93,949.47
Total 4600 Existing Building Improvement Services				\$5,922,823.05

LEA : 124157802 Tredyffrin-Easttown SD

Printed 11/27/2019 10:37:57 AM

Other Capital Projects Fund (39)

5000 Other Expenditures and Financing Uses

Total

800 <u>Other Objects</u>	
830 Interest	118,118.28
Total Other Objects	\$118,118.28
900 <u>Other Uses of Funds</u>	
990 Miscellaneous Other Uses of Funds	745,691.60
Total Other Uses of Funds	\$745,691.60
Total 5000 Other Expenditures and Financing Uses	\$863,809.88

LEA : 124157802 Tredyffrin-Easttown SD

Printed 11/27/2019 10:37:57 AM

Other Capital Projects Fund (39)

5100 Debt Service / Other Expenditures and Financing Uses	<u>Elementary</u>	<u>Secondary</u>	<u>Federal</u>	<u>Total</u>
800 <u>Other Objects</u>				
830 Interest				118,118.28
Total Other Objects				\$118,118.28
900 <u>Other Uses of Funds</u>				
990 Miscellaneous Other Uses of Funds				745,691.60
Total Other Uses of Funds				\$745,691.60
Total 5100 Debt Service / Other Expenditures and Financing Uses				\$863,809.88

LEA : 124157802 Tredyffrin-Easttown SD

Printed 11/27/2019 10:37:57 AM

Other Capital Projects Fund (39)

5110 Debt Service	<u>Elementary</u>	<u>Secondary</u>	<u>Federal</u>	<u>Total</u>
800 <u>Other Objects</u>				
830 Interest				118,118.28
Total Other Objects				\$118,118.28
Total 5110 Debt Service				\$118,118.28

LEA : 124157802 Tredyffrin-Easttown SD

Printed 11/27/2019 10:37:57 AM

Other Capital Projects Fund (39)

5150 Bond Discounts

Elementary Secondary Federal Total

900 Other Uses of Funds

990 Miscellaneous Other Uses of Funds 745,691.60

Total Other Uses of Funds \$745,691.60

Total 5150 Bond Discounts \$745,691.60

LEA : 124157802 Tredyffrin-Easttown SD

Printed 11/27/2019 10:37:58 AM

Debt Service Fund (40)

5000 Other Expenditures and Financing Uses

Total

800 <u>Other Objects</u>	
830 Interest	2,073,954.32
Total Other Objects	\$2,073,954.32
900 <u>Other Uses of Funds</u>	
910 Redemption of Principal	4,790,000.00
Total Other Uses of Funds	\$4,790,000.00
Total 5000 Other Expenditures and Financing Uses	\$6,863,954.32

LEA : 124157802 Tredyffrin-Easttown SD

Printed 11/27/2019 10:37:58 AM

Debt Service Fund (40)

5100 Debt Service / Other Expenditures and Financing Uses	<u>Elementary</u>	<u>Secondary</u>	<u>Federal</u>	<u>Total</u>
800 <u>Other Objects</u>				
830 Interest				2,073,954.32
Total Other Objects				\$2,073,954.32
900 <u>Other Uses of Funds</u>				
910 Redemption of Principal				4,790,000.00
Total Other Uses of Funds				\$4,790,000.00
Total 5100 Debt Service / Other Expenditures and Financing Uses				\$6,863,954.32

LEA : 124157802 Tredyffrin-Easttown SD

Printed 11/27/2019 10:37:58 AM

Debt Service Fund (40)

5110 Debt Service	<u>Elementary</u>	<u>Secondary</u>	<u>Federal</u>	<u>Total</u>
800 <u>Other Objects</u>				
830 Interest				2,073,954.32
Total Other Objects				\$2,073,954.32
900 <u>Other Uses of Funds</u>				
910 Redemption of Principal				4,790,000.00
Total Other Uses of Funds				\$4,790,000.00
Total 5110 Debt Service				\$6,863,954.32

LEA : 124157802 Tredyffrin-Easttown SD

Printed 11/27/2019 10:38:10 AM

	<u>General Fund(10)</u>	<u>Public Purpose Trust(27)</u>	<u>Other Compt Approved (28)</u>	<u>Athletic / Activity(29)</u>	<u>Capital Reserve (690. 1850)(31)</u>
1000 <u>Instruction</u>					
1100 Regular Programs - Elementary / Secondary	61,953,511.14				
1200 Special Programs - Elementary / Secondary	24,049,048.48				
1300 Vocational Education	675,627.00				
1400 Other Instructional Programs - Elementary / Secondary	52,650.54				
Total Instruction	\$86,730,837.16				
2000 <u>Support Services</u>					
2100 Support Services - Students	5,276,562.46				
2200 Support Services - Instructional Staff	3,961,582.74				
2300 Support Services - Administration	8,195,675.21				
2400 Support Services - Pupil Health	1,451,113.10				
2500 Support Services - Business	1,347,527.27				
2600 Operation and Maintenance of Plant Services	11,379,130.20				
2700 Student Transportation Services	7,267,678.70				
2800 Support Services - Central	3,597,436.46				
2900 Other Support Services	584,818.89				
Total Support Services	\$43,061,525.03				
3000 <u>Operation of Non-Instructional Services</u>					
3200 Student Activities	2,026,191.73				
Total Operation of Non-Instructional Services	\$2,026,191.73				
4000 <u>Facilities Acquisition, Construction and Improvement Services</u>					
4600 Existing Building Improvement Services					
Total Facilities Acquisition, Construction and Improvement					
5000 <u>Other Expenditures and Financing Uses</u>					
5100 Debt Service / Other Expenditures and Financing Uses	12,908.54				
5200 Interfund Transfers - Out	10,863,954.00				
Total Other Expenditures and Financing Uses	\$10,876,862.54				
TOTAL ACTUAL EXPENDITURES & OTHER FINANCING USES	\$142,695,416.46				

LEA : 124157802 Tredyffrin-Easttown SD

Printed 11/27/2019 10:38:10 AM

	<u>Capital Reserve (1431)(32)</u>	<u>Other Capital Projects Fund(39)</u>	<u>Debt Service(40)</u>	<u>Permanent(90)</u>	<u>Total</u>
1000 <u>Instruction</u>					
1100 Regular Programs - Elementary / Secondary					61,953,511.14
1200 Special Programs - Elementary / Secondary					24,049,048.48
1300 Vocational Education					675,627.00
1400 Other Instructional Programs - Elementary / Secondary					52,650.54
Total Instruction					\$86,730,837.16
2000 <u>Support Services</u>					
2100 Support Services - Students					5,276,562.46
2200 Support Services - Instructional Staff					3,961,582.74
2300 Support Services - Administration					8,195,675.21
2400 Support Services - Pupil Health					1,451,113.10
2500 Support Services - Business					1,347,527.27
2600 Operation and Maintenance of Plant Services					11,379,130.20
2700 Student Transportation Services					7,267,678.70
2800 Support Services - Central					3,597,436.46
2900 Other Support Services					584,818.89
Total Support Services					\$43,061,525.03
3000 <u>Operation of Non-Instructional Services</u>					
3200 Student Activities					2,026,191.73
Total Operation of Non-Instructional Services					\$2,026,191.73
4000 <u>Facilities Acquisition, Construction and Improvement Services</u>					
4600 Existing Building Improvement Services	3,145.58	5,922,823.05			5,925,968.63
Total Facilities Acquisition, Construction and Improvement	\$3,145.58	\$5,922,823.05			\$5,925,968.63
5000 <u>Other Expenditures and Financing Uses</u>					
5100 Debt Service / Other Expenditures and Financing Uses		863,809.88	6,863,954.32		7,740,672.74
5200 Interfund Transfers - Out					10,863,954.00
Total Other Expenditures and Financing Uses		\$863,809.88	\$6,863,954.32		\$18,604,626.74
TOTAL ACTUAL EXPENDITURES & OTHER FINANCING USES	\$3,145.58	\$6,786,632.93	\$6,863,954.32		\$156,349,149.29

LEA : 124157802 Tredyffrin-Easttown SD

Printed 11/27/2019 10:38:18 AM

PSERS Salary Data (Salary Data should relate to the General Fund only)

Amount	Description	Amount
	Total Salary Base for salaries subject to PSERS withholding	57,946,827.00
	Total Federally Funded salaries subject to PSERS withholding	466,684.59

Title I Expenditure Data

Amount	Description	Amount
	Expenditures Funded with Current Title I Funds	274,421.00
	Expenditures Funded with Carry over Title I Funds	
Total	Title I Expenditure Data	\$274,421.00

Benefits for Staff Relative to Collective Bargaining Agreements

	OBJECT	COVERED	NOT COVERED	TOTAL
10 General Fund				
	211 Medical Insurance			
	212 Dental Insurance			
	215 Eye Care Insurance			
	216 Prescription Insurance			
	271 Self-Insurance Medical Benefits	7,260,397.32	589,051.10	7,849,448.42
	272 Self-Insurance Dental Benefits	535,843.31	43,474.08	579,317.39
	275 Self-Insurance Eye Care Benefits	107,953.16	8,758.46	116,711.62
	276 Self-Insurance Prescription Benefits	1,889,242.48	153,278.16	2,042,520.64
	FUND TOTAL	\$9,793,436.27	\$794,561.80	\$10,587,998.07
50 Enterprise Fund				
	211 Medical Insurance			
	212 Dental Insurance			
	215 Eye Care Insurance			
	216 Prescription Insurance			
	271 Self-Insurance Medical Benefits	252,649.61	5,974.56	258,624.17
	272 Self-Insurance Dental Benefits	20,365.77	476.16	20,841.93
	275 Self-Insurance Eye Care Benefits	4,002.31	91.80	4,094.11
	276 Self-Insurance Prescription Benefits	75,285.54	1,946.88	77,232.42
	FUND TOTAL	\$352,303.23	\$8,489.40	\$360,792.63
60 Internal Service Fund	No Self Insurance data to report			
	211 Medical Insurance			
	212 Dental Insurance			
	215 Eye Care Insurance			
	216 Prescription Insurance			
	271 Self-Insurance Medical Benefits			
	272 Self-Insurance Dental Benefits			
	275 Self-Insurance Eye Care Benefits			
	276 Self-Insurance Prescription Benefits			
	FUND TOTAL			
Total of All Funds		\$10,145,739.50	\$803,051.20	\$10,948,790.70

LEA : 124157802 Tredyffrin-Easttown SD

Printed 11/27/2019 10:38:22 AM

Function	Special Education (Prior Year)	Nonspecial Education (Prior Year)	Total (Prior Year)	Special Education (Current Year)	Nonspecial Education (Current Year)	Total (Current Year)
2120 Guidance Services	516,853.58	3,174,957.72	3,691,811.30	561,162.00	3,447,138.02	4,008,300.02
2140 Psychological Services	647.50	12,302.50	12,950.00			
2150 Speech Pathology and Audiology Services	104.94	1,993.84	2,098.78	885.33	16,821.18	17,706.51
2160 Social Work Services						
2260 Instruction and Curriculum Development Services	248,536.62	1,526,724.98	1,775,261.60	231,418.67	1,421,571.82	1,652,990.49
2350 Legal and Accounting Services	169,134.96	309,239.05	478,374.01	163,782.85	304,168.15	467,951.00
2420 Medical Services		32,478.86	32,478.86		301,649.87	301,649.87
2440 Nursing Services	42,961.76	243,228.06	286,189.82	5,507.74	31,210.56	36,718.30
2700 Student Transportation Services	2,406,957.89	5,114,806.77	7,521,764.66	2,325,650.61	4,942,028.09	7,267,678.70
Total	\$3,385,197.25	\$10,415,731.78	\$13,800,929.03	\$3,288,407.20	\$10,464,587.69	\$13,752,994.89

LEA : 124157802 Tredyffrin-Easttown SD

Printed 11/27/2019 10:38:25 AM

(PRINCIPAL AMOUNTS ONLY)								
<u>GOVERNMENTAL FUNDS/ ACTIVITIES</u>	Short-Term Borrowing	General Obligation Bonds/Notes	Authority Building Obligations	Other Long-Term Debt	Other Post- Employment Benefits (OPEB)	Compensated Absences	Net Pension Liability	Total
1. Debt at Beginning of Fiscal Year		50,450,000.00			17,866,990.00	7,171,207.00	280,675,000.00	356,163,197.00
2. Additional Debt Incurred During Year		26,915,000.00			283,081.00	173,462.00		27,371,543.00
3. Retirements and Repayments		4,790,000.00					3,959,000.00	8,749,000.00
4. Debt at End of Fiscal Year		72,575,000.00			18,150,071.00	7,344,669.00	276,716,000.00	374,785,740.00
5. Accreted Interest at End Of Fiscal Year								
6. Total Debt and Accreted Interest		72,575,000.00			18,150,071.00	7,344,669.00	276,716,000.00	374,785,740.00
7. Current Portion P&I - Due within 1 year		6,746,088.76						6,746,088.76
8. Interest Paid during current fiscal year		2,192,072.60						2,192,072.60

(PRINCIPAL AMOUNTS ONLY)								
<u>PROPRIETARY FUNDS</u>	Short-Term Borrowing	General Obligation Bonds/Notes	Authority Building Obligations	Other Long-Term Debt	Other Post- Employment Benefits (OPEB)	Compensated Absences	Net Pension Liability	Total
1. Debt at Beginning of Fiscal Year					325,078.00	48,021.00	3,794,000.00	4,167,099.00
2. Additional Debt Incurred During Year					5,002.00	18,281.00		23,283.00
3. Retirements and Repayments							72,000.00	72,000.00
4. Debt at End of Fiscal Year					330,080.00	66,302.00	3,722,000.00	4,118,382.00
5. Accreted Interest at End Of Fiscal Year								
6. Total Debt and Accreted Interest					330,080.00	66,302.00	3,722,000.00	4,118,382.00
7. Current Portion P&I - Due within 1 year								
8. Interest Paid during current fiscal year								

LEA : 124157802 Tredyffrin-Easttown SD

Printed 11/27/2019 10:38:25 AM

Total Principal and Interest Payments Made by Your School - All Funds

Function	Fund		Principal (910)	Principal (920)	Interest (830)	Total (Principal +Interest)	Misc Other Uses (990)
5110	10	General Fund					
5110	20	Special Revenue Funds					
5110	30	Capital Projects Funds			118,118.28	118,118.28	
5110	40	Debt Service Fund	4,790,000.00		2,073,954.32	6,863,954.32	
5110	90	Permanent Fund					
5120	10	General Fund					
5120	20	Special Revenue Funds					
5120	30	Capital Projects Funds					
5120	40	Debt Service Fund					
Total Debt Payments - Governmental Funds			\$4,790,000.00		\$2,192,072.60	\$6,982,072.60	

Function	Fund		Principal (910)	Principal (920)	Interest (830)	Total (Principal +Interest)
5110	50	Enterprise Fund				
5110	60	Internal Service Fund				
5120	50	Enterprise Fund				
5120	60	Internal Service Fund				
Total Debt Payments - Proprietary Funds						

LEA : 124157802 Tredyffrin-Easttown SD

Printed 11/27/2019 10:38:25 AM

Debt Details
Governmental Funds/ Activities

Debt Category	Debt Issue Date (MM/YYYY)	Principal Amounts Only				Current Portion Due Within One Year (Principal and Interest)	Interest Paid During Fiscal Year
		Debt at Beginning of Fiscal Year	Additions	Reductions / Repayments	Debt at End of Fiscal Year		
General Obligation Bonds/Notes – CIB	02/2019		26,915,000.00		26,915,000.00	1,158,370.00	
General Obligation Bonds/Notes – CIB	10/2016	12,810,000.00		5,000.00	12,805,000.00	517,100.00	512,170.76
General Obligation Bonds/Notes – CIB	03/2015	22,430,000.00		5,000.00	22,425,000.00	1,039,118.76	984,174.15
General Obligation Bonds/Notes – CIB	10/2014	4,765,000.00		4,765,000.00			173,800.19
General Obligation Bonds/Notes – CIB	09/2010	10,445,000.00		15,000.00	10,430,000.00	4,031,500.00	521,927.50
Compensated Absences		7,171,207.00	173,462.00		7,344,669.00		
Other Post-Employment Benefits (OPEB)		17,866,990.00	283,081.00		18,150,071.00		
Net Pension Liability		280,675,000.00		3,959,000.00	276,716,000.00		
Totals for Debt Entered:		\$356,163,197.00	\$27,371,543.00	\$8,749,000.00	\$374,785,740.00	\$6,746,088.76	\$2,192,072.60

Bond Details
Proprietary Funds

Debt Category	Debt Issue Date (MM/YYYY)	Principal Amounts Only				Current Portion Due Within One Year (Principal and Interest)	Interest Paid During Fiscal Year
		Debt at Beginning of Fiscal Year	Additions	Reductions / Repayments	Debt at End of Fiscal Year		
Compensated Absences		48,021.00	18,281.00		66,302.00		
Other Post-Employment Benefits (OPEB)		325,078.00	5,002.00		330,080.00		
Net Pension Liability		3,794,000.00		72,000.00	3,722,000.00		
Totals for Debt Entered:		\$4,167,099.00	\$23,283.00	\$72,000.00	\$4,118,382.00		

LEA : 124157802 Tredyffrin-Easttown SD

General Fund (10)

Section 1: Tuition/Purchased Services as Reported within Expenditure Detail	Amount
Tuition Reported in General Fund Expenditures 1000-560	4,407,226.56
Purchased Services in General Fund Expenditures 1000-594 and 1000-597	
Section 1 Total	\$4,407,226.56

Section 2: Tuition Paid to Institution Types During Fiscal Year	Tuition Paid For Nonspecial Education	Tuition Paid For Special Education	Total
1 1306 Institutions		97,302.56	97,302.56
2 Institutionalized Children's Programs			
3 Juveniles Incarcerated in Adult Facilities	1,441.00		1,441.00
4 Residential Treatment Facilities		240.00	240.00
5 Other Local Education Agencies			
6 Brick and Mortar Charter Schools	141,723.84		141,723.84
7 Cyber Charter Schools	354,458.00		354,458.00
8 Career and Technology Centers	675,627.00		675,627.00
9 Approved Private Schools		1,232,074.00	1,232,074.00
10 PA Chartered Schools for the Deaf and Blind			
11 Private Residential Rehabilitative Institutions		5,782.00	5,782.00
12 Juvenile Detention Centers			
13 Special Program Jointures			
14 Other Tuition Not Included Elsewhere In This Section		1,898,578.16	1,898,578.16
Section 2 Total	\$1,173,249.84	\$3,233,976.72	\$4,407,226.56

LEA : 124157802 Tredyffrin-Easttown SD

Printed 11/27/2019 10:38:29 AM

Food Service / Cafeteria Operations Fund (51)

3000 Operation of Non-Instructional Services		<u>Total</u>
100 <u>Personnel Services – Salaries</u>		
100 Personnel Services – Salaries	971,723.00	
Total Personnel Services – Salaries	\$971,723.00	
200 <u>Personnel Services – Employee Benefits</u>		
210 Group Insurance – Contracted Provider	416,136.00	
220 Social Security Contributions	71,384.50	
230 PSERS Retirement Contributions	312,293.96	
250 Unemployment Compensation	50.03	
Total Personnel Services – Employee Benefits	\$799,864.49	
400 <u>Purchased Property Services</u>		
430 Repairs and Maintenance Services	42,213.76	
440 Rentals	114.58	
Total Purchased Property Services	\$42,328.34	
500 <u>Other Purchased Services</u>		
540 Advertising	34.83	
550 Printing and Binding	279.30	
Total Other Purchased Services	\$314.13	
600 <u>Supplies</u>		
610 General Supplies	69,641.13	
630 Food	937,959.13	
640 Books and Periodicals	9,550.00	
Total Supplies	\$1,017,150.26	
700 <u>Property</u>		
740 Depreciation	79,160.00	
Total Property	\$79,160.00	
800 <u>Other Objects</u>		
810 Dues and Fees	3,656.51	
Total Other Objects	\$3,656.51	
Total 3000 Operation of Non-Instructional Services	\$2,914,196.73	

LEA : 124157802 Tredyffrin-Easttown SD

Printed 11/27/2019 10:38:29 AM

Food Service / Cafeteria Operations Fund (51)

3100 Food Services	<u>Elementary</u>	<u>Secondary</u>	<u>Federal</u>	<u>Total</u>
100 <u>Personnel Services – Salaries</u>				
100 Personnel Services – Salaries				971,723.00
Total Personnel Services – Salaries				\$971,723.00
200 <u>Personnel Services – Employee Benefits</u>				
210 Group Insurance – Contracted Provider				416,136.00
220 Social Security Contributions				71,384.50
230 PSERS Retirement Contributions				312,293.96
250 Unemployment Compensation				50.03
Total Personnel Services – Employee Benefits				\$799,864.49
400 <u>Purchased Property Services</u>				
430 Repairs and Maintenance Services				42,213.76
440 Rentals				114.58
Total Purchased Property Services				\$42,328.34
500 <u>Other Purchased Services</u>				
540 Advertising				34.83
550 Printing and Binding				279.30
Total Other Purchased Services				\$314.13
600 <u>Supplies</u>				
610 General Supplies				69,641.13
630 Food				937,959.13
640 Books and Periodicals				9,550.00
Total Supplies				\$1,017,150.26
700 <u>Property</u>				
740 Depreciation				79,160.00
Total Property				\$79,160.00
800 <u>Other Objects</u>				
810 Dues and Fees				3,656.51
Total Other Objects				\$3,656.51
Total 3100 Food Services				\$2,914,196.73

	<u>Food Service(51)</u>	<u>Child Care Operations(52)</u>	<u>Other Enterprise(58)</u>	<u>Internal Service(60)</u>	<u>Total</u>
3000 <u>Operation of Non-Instructional Services</u>					
3100 Food Services	2,914,196.73				2,914,196.73
Total Operation of Non-Instructional Services	\$2,914,196.73				\$2,914,196.73
TOTAL ACTUAL EXPENDITURES & OTHER FINANCING USES	\$2,914,196.73				\$2,914,196.73

LEA : 124157802 Tredyffrin-Easttown SD

Fund	School	School Number	Local Personnel	Local Nonpersonnel	State Personnel	State Nonpersonnel	Federal Personnel	Federal Nonpersonnel	Total	Explanation
10										
	Beaumont El Sch	4690	5,268,829.00	1,178,875.00	994,802.00	222,582.00	35,022.00	7,836.00	7,707,946.00	
	Conestoga SHS	1423	25,241,710.00	7,751,053.00	4,765,860.00	1,463,468.00	167,781.00	51,521.00	39,441,393.00	
	Devon El Sch	1434	5,325,293.00	1,122,006.00	1,005,463.00	211,845.00	35,397.00	7,458.00	7,707,462.00	
	Hillside El Sch	1439	5,375,682.00	1,167,230.00	1,014,977.00	220,384.00	35,732.00	7,759.00	7,821,764.00	
	New Eagle El Sch	1440	5,384,497.00	1,144,370.00	1,016,641.00	216,067.00	35,791.00	7,607.00	7,804,973.00	
	Tredyffrin-Easttown MS	1421	13,225,543.00	2,920,357.00	2,497,100.00	551,390.00	87,910.00	19,412.00	19,301,712.00	
	Valley Forge El Sch	1438	5,599,562.00	1,334,042.00	1,057,247.00	251,879.00	37,220.00	8,867.00	8,288,817.00	
	Valley Forge MS	4689	13,265,535.00	3,019,017.00	2,504,651.00	570,017.00	88,176.00	20,067.00	19,467,463.00	
Total			78,686,651.00	19,636,950.00	14,856,741.00	3,707,632.00	523,029.00	130,527.00	117,541,530.00	